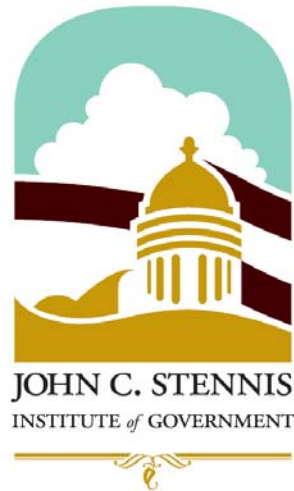


## A QUICK LOOK AT BRIDGES IN MISSISSIPPI

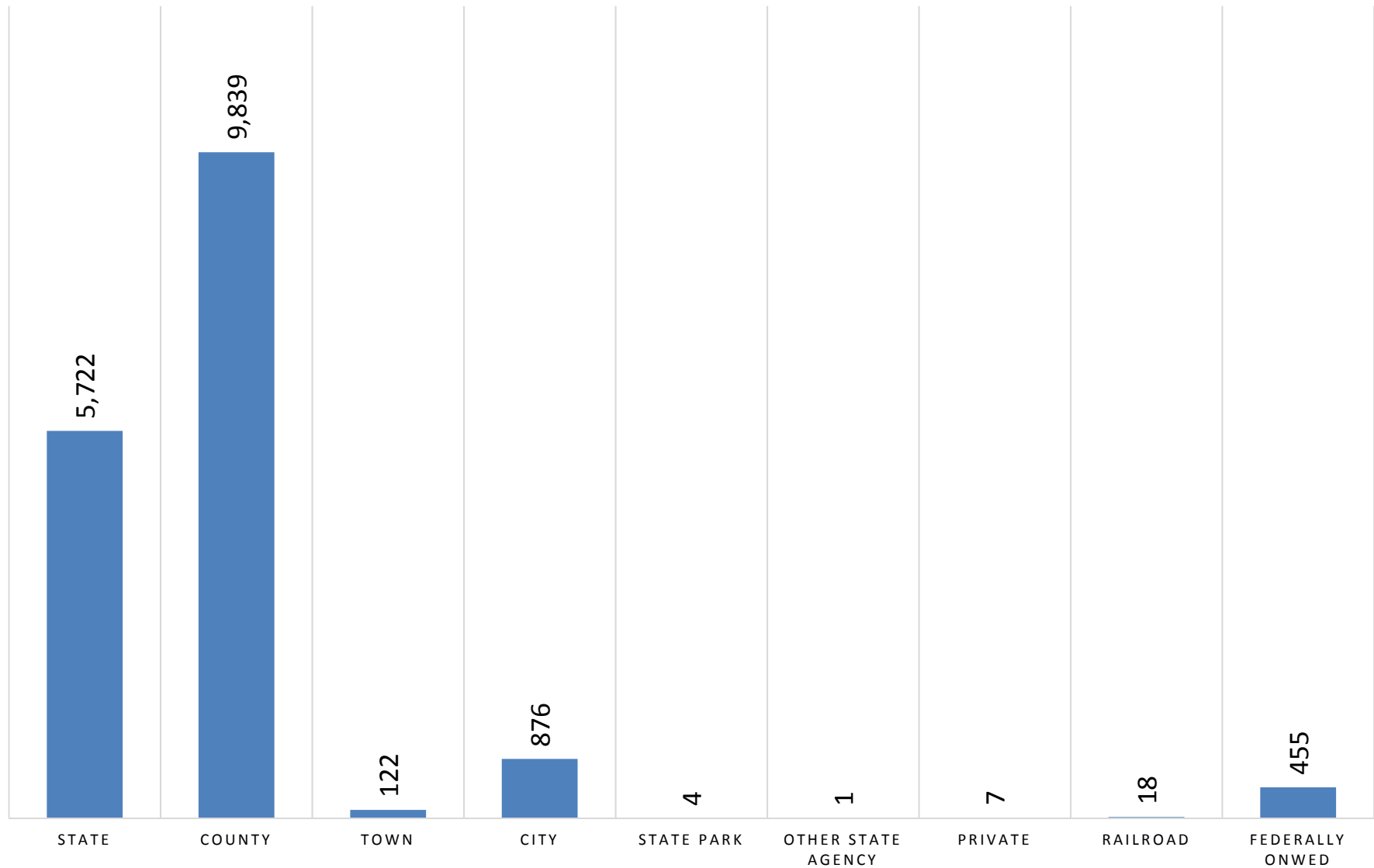


**This document is an initial draft that is designed to be shared only with members of Mississippi Economic Council's Transportation Task Force and is not intended for publication or for any other distribution.**

## MISSISSIPPI BRIDGES BY OWNER AS OF 12/2013

**TOTAL: 17,044**

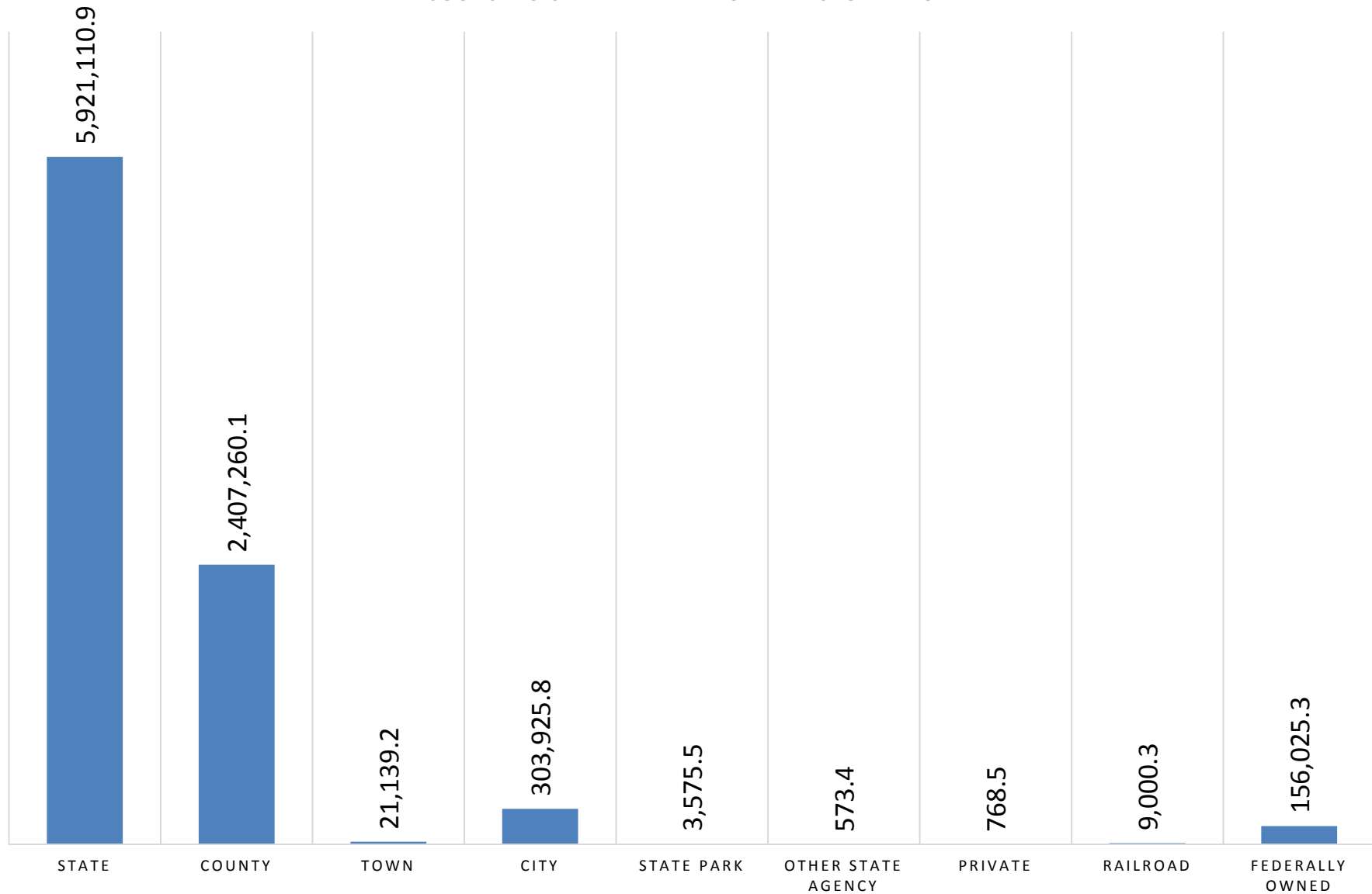
*SOURCE: U.S. DEPARTMENT OF TRANSPORTATION*



## MISSISSIPPI BRIDGE OWNERSHIP IN SQUARE METERS

TOTAL: 8,823,379 SQ. METERS AS OF 12/2013

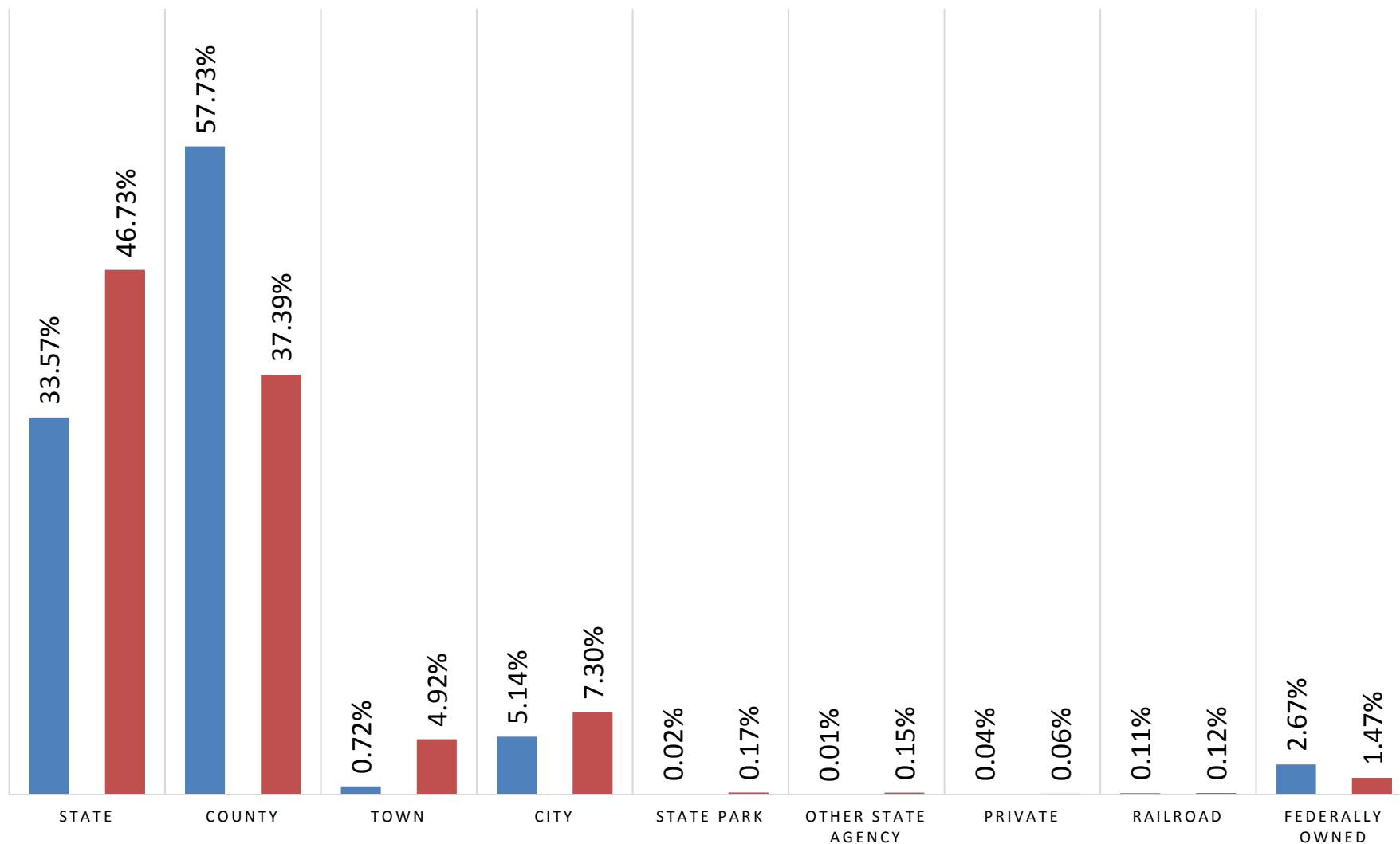
SOURCE: U.S. DEPARTMENT OF TRANSPORTATION



# PERCENT DISTRIBUTION OF TOTAL BRIDGES BY OWNERSHIP MISSISSIPPI AND THE UNITED STATES AS OF 12/2013

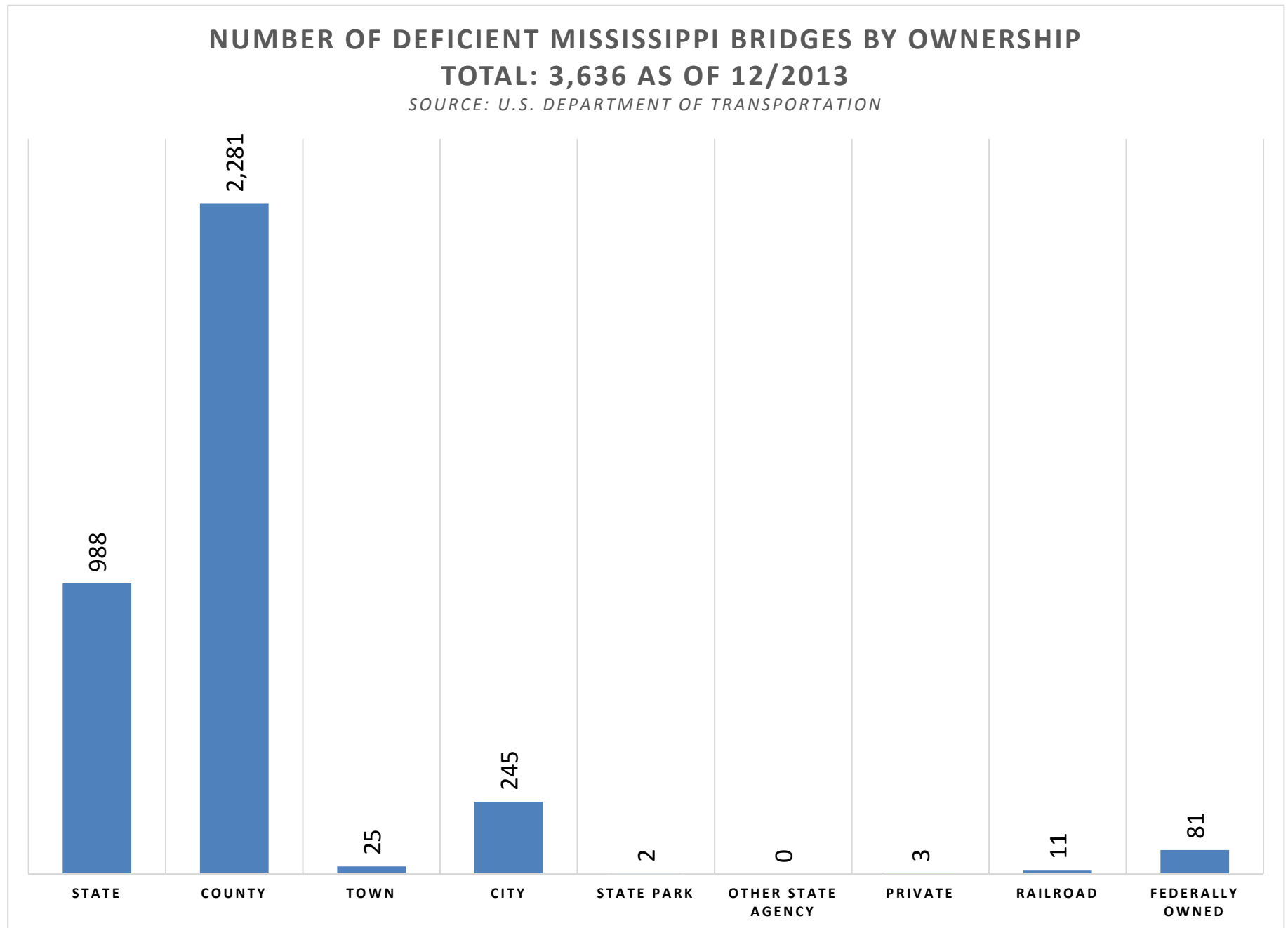
SOURCE: U.S. DEPARTMENT OF TRANSPORTATION

■ MS Bridges by Ownership ■ U.S. Bridges by Ownership



Ownership categories that do not exist in Mississippi are excluded, these include:  
Local Parks, Other Local, and State and Local Toll Bridges

Prepared by The Stennis Institute

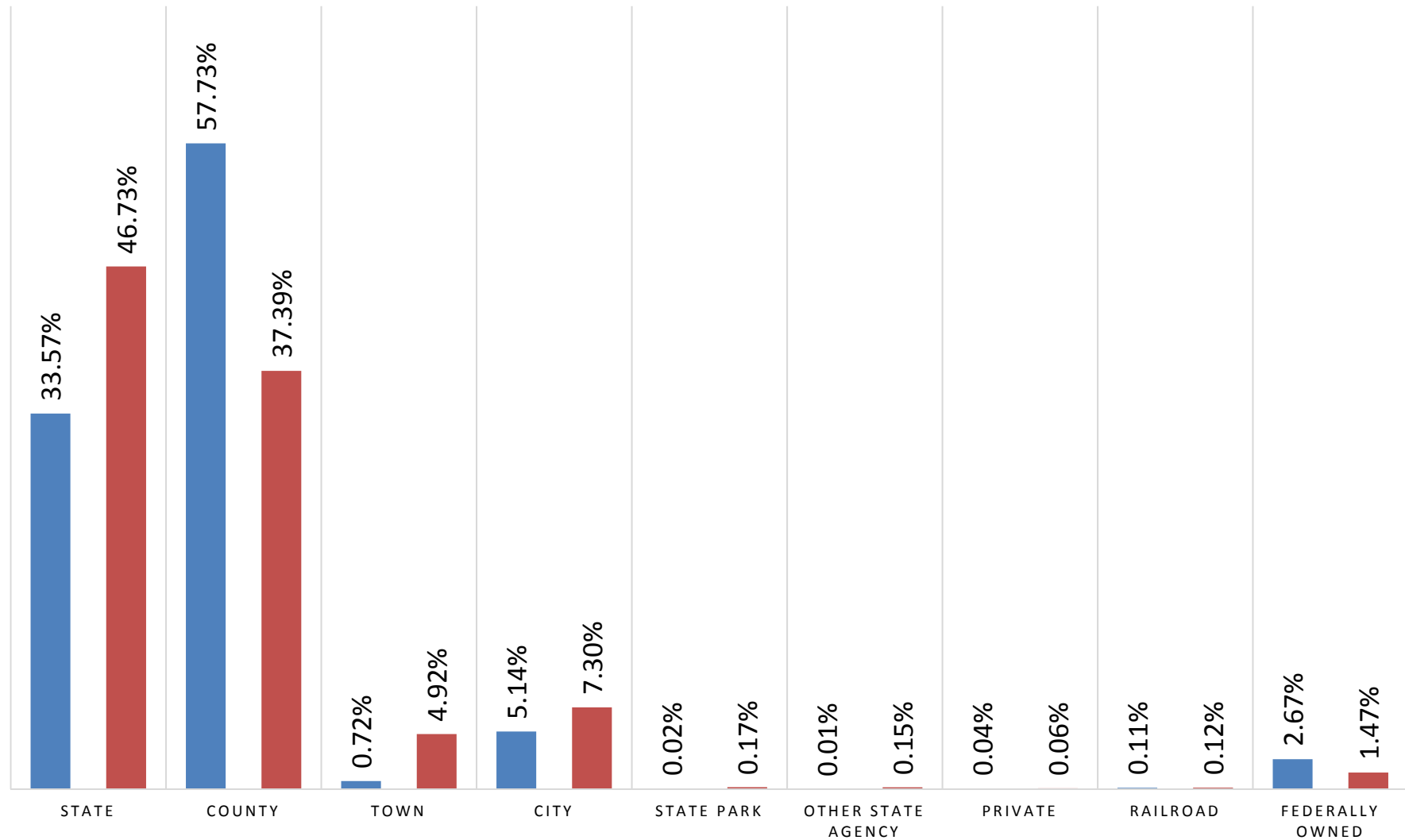


Ownership categories that do not exist in Mississippi are excluded, these are: Local Parks, Other Local, and State and Local Toll Bridge

## PERCENT DISTRIBUTION OF DEFICIENT BRIDGES BY OWNERSHIP MISSISSIPPI AND THE UNITED STATES AS OF 12/2013

SOURCE: U.S. DEPARTMENT OF TRANSPORTATION

■ MS Bridges by Ownership ■ U.S. Bridges by Ownership

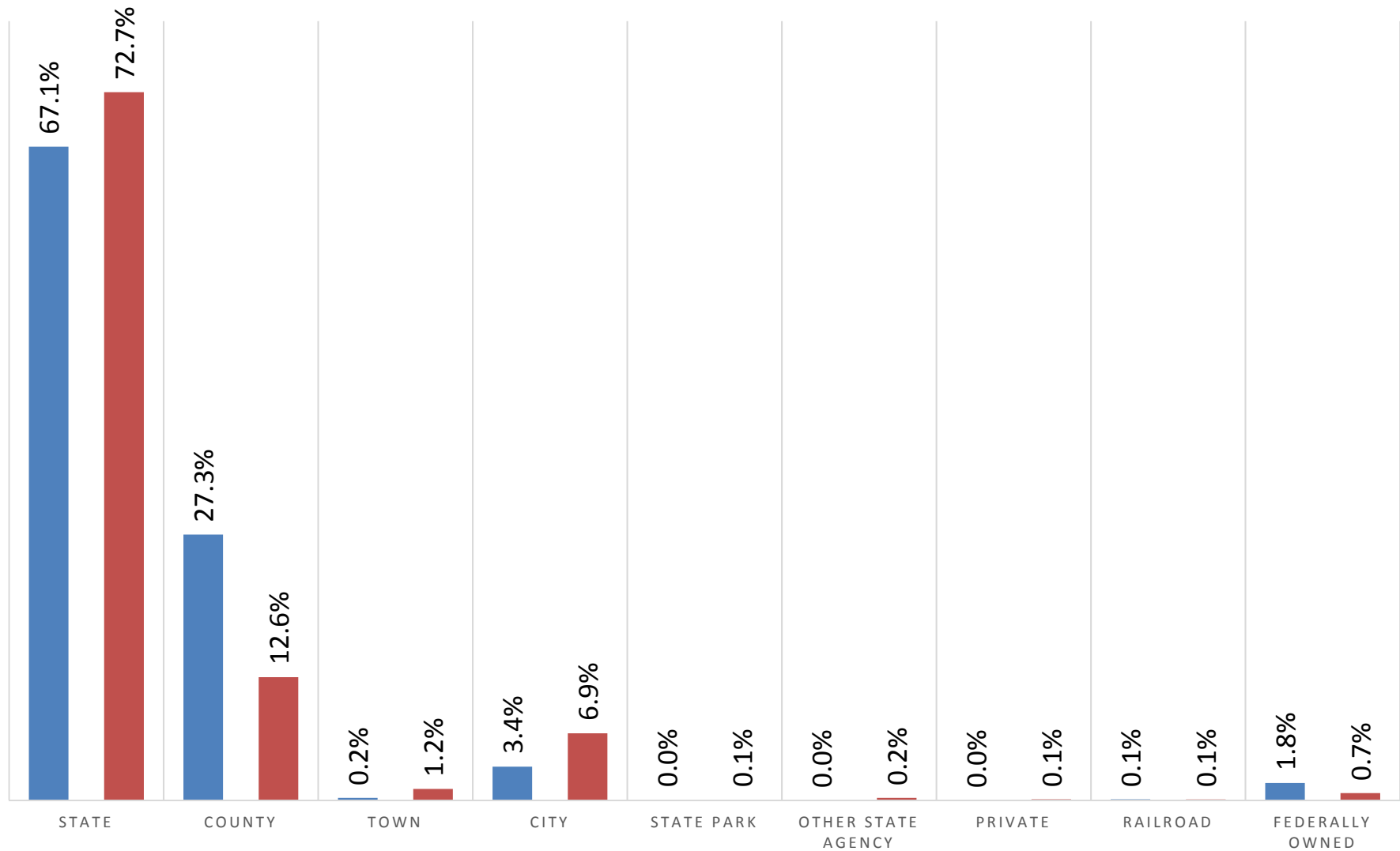


Ownership categories that do not exist in Mississippi are excluded, these are: Local Parks, Other Local, and State and Local Toll Bridges

# PERCENT DISTRIBUTION OF BRIDGE OWNERSHIP IN SQUARE METERS MISSISSIPPI AND THE UNITED STATES AS OF 12/2013

SOURCE: U.S. DEPARTMENT OF TRANSPORTATION

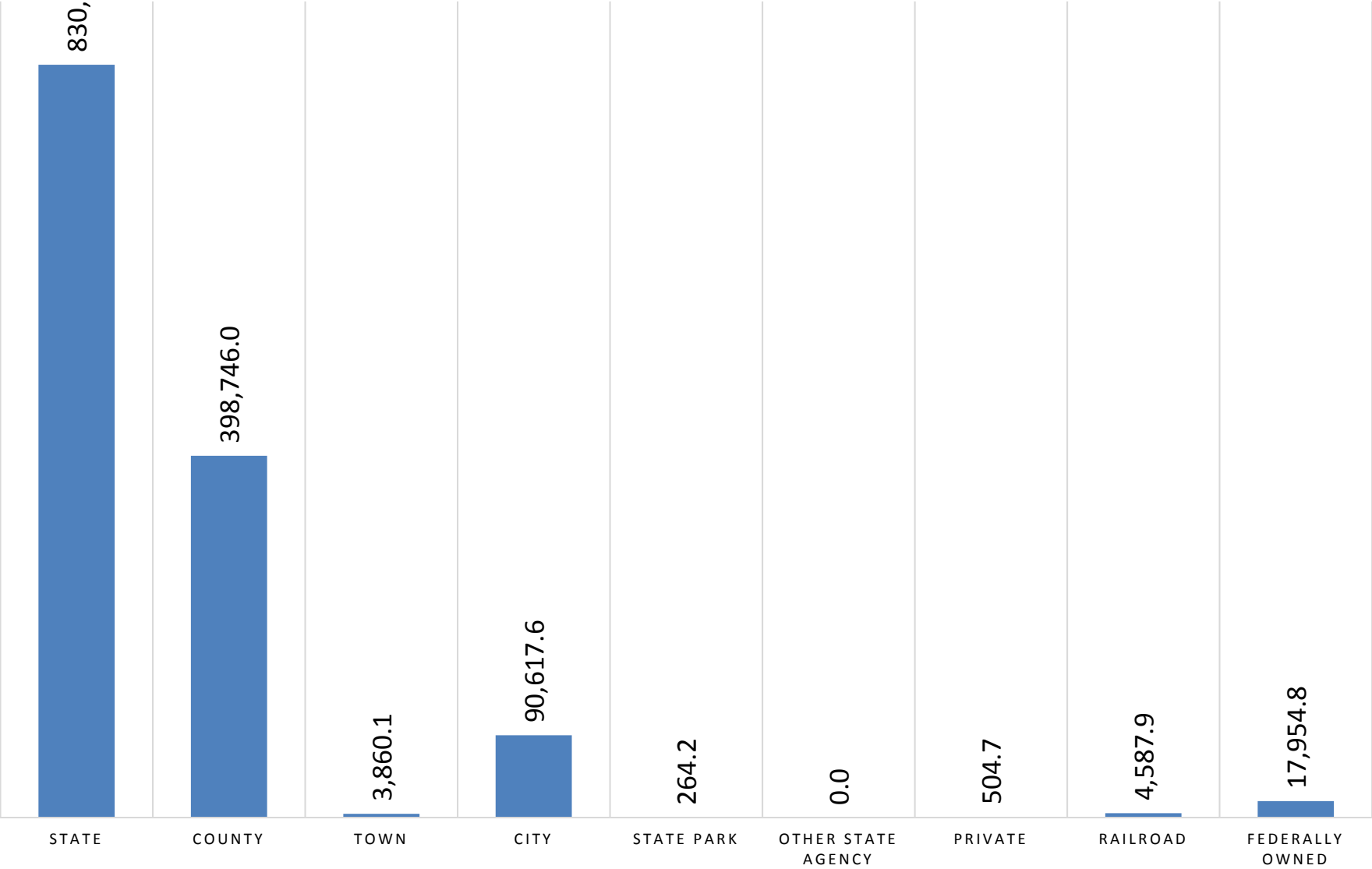
■ Mississippi Bridges by Ownership ■ U.S. Bridges by Ownership



**DEFICIENT BRIDGES IN MISSISSIPPI EXPRESSED IN SQUARE METERS**

**TOTAL: 1,346,652.6 SQUARE METERS AS OF 12/2013**

*SOURCE: U.S. DEPARTMENT OF TRANSPORTATION*

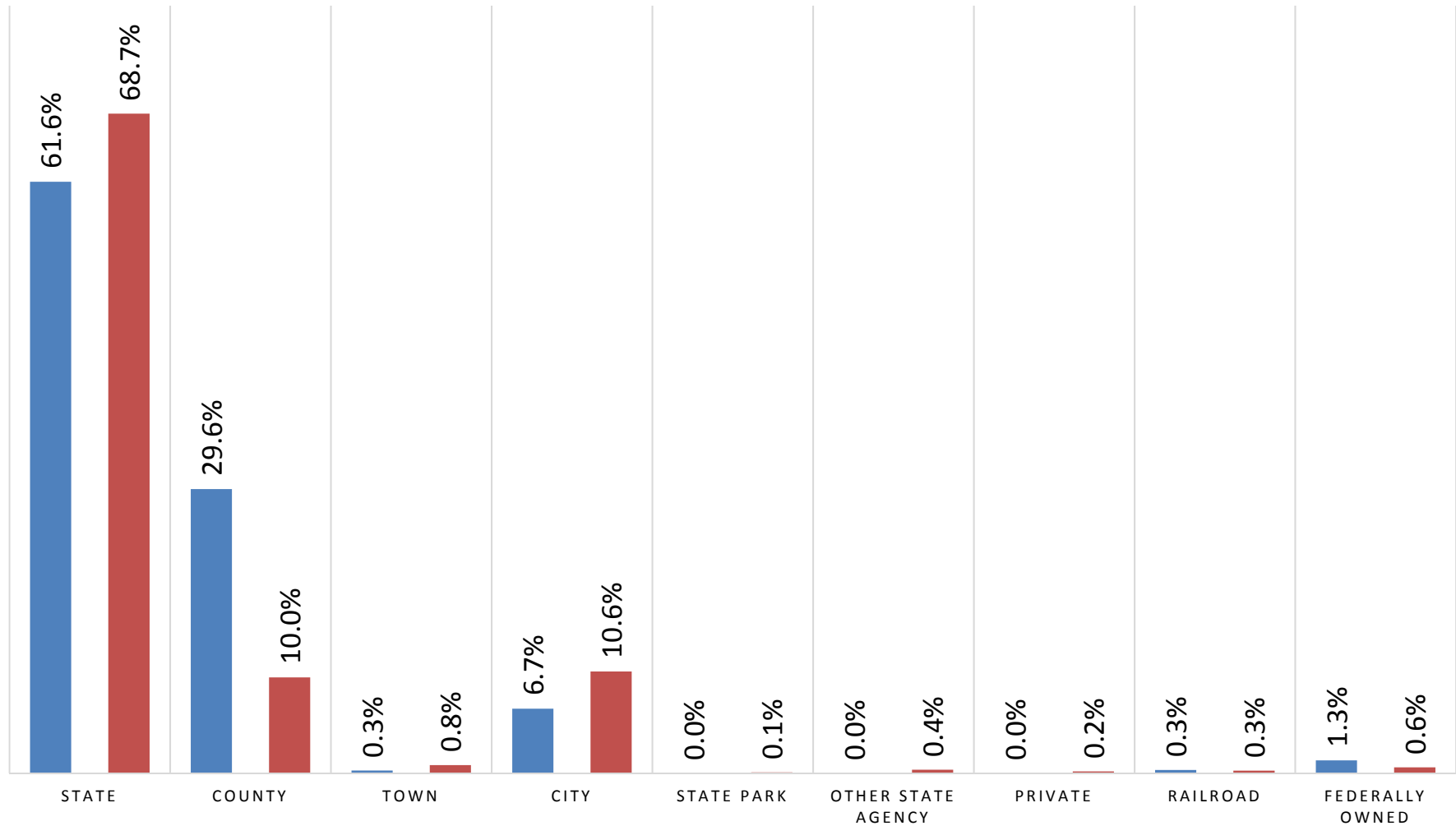




**PERCENT DISTRIBUTION OF DEFICIENT BRIDGES BY OWNERSHIP  
EXPRESSED IN SQUARE METERS  
MISSISSIPPI AND THE UNITED STATES AS OF 12/2013**

*SOURCE: U.S. DEPARTMENT OF TRANSPORTATION*

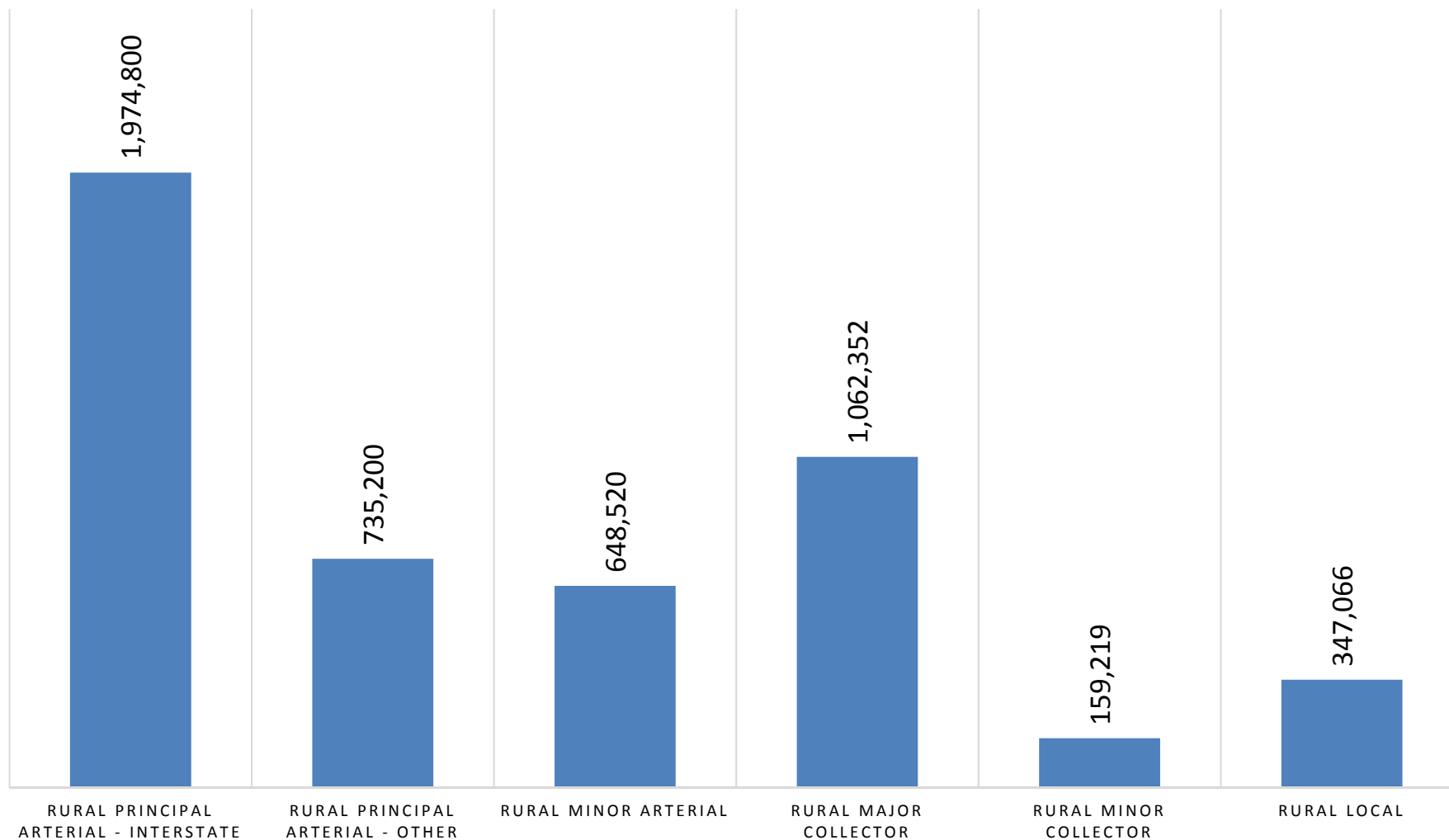
■ Mississippi Deficient Bridges ■ U.S. Deficient Bridges



## AVERAGE DAILY TRAFFIC ON DEFICIENT BRIDGES IN RURAL MISSISSIPPI AREAS 2014

### BY FUNCTIONAL CLASSIFICATION

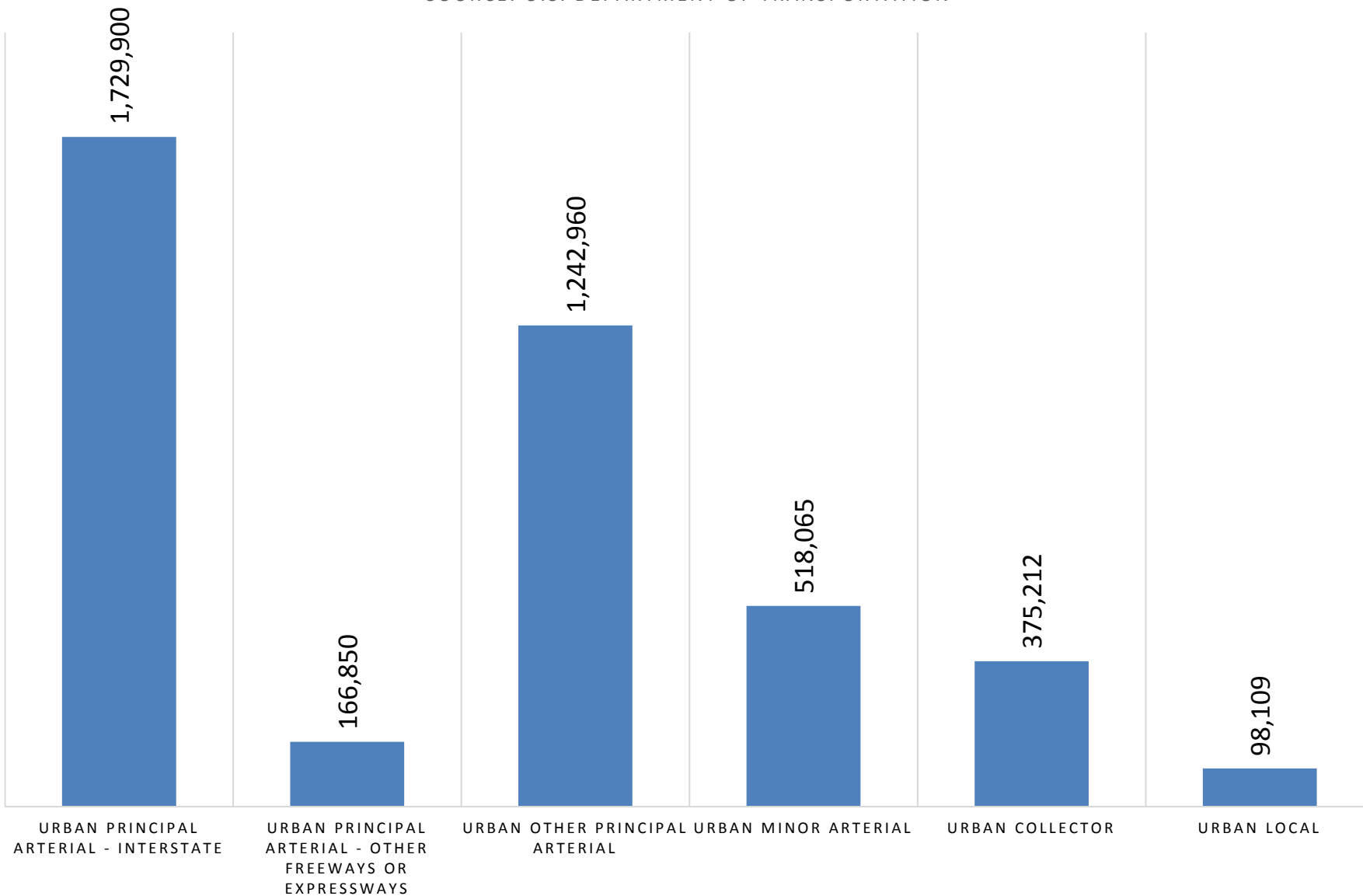
SOURCE: U.S. DEPARTMENT OF TRANSPORTATION



Deficient Bridges includes those that are structurally deficient and those that are functionally obsolete

# AVERAGE DAILY TRAFFIC ON DEFICIENT BRIDGES IN MISSISSIPPI URBAN AREAS 2014

SOURCE: U.S. DEPARTMENT OF TRANSPORTATION

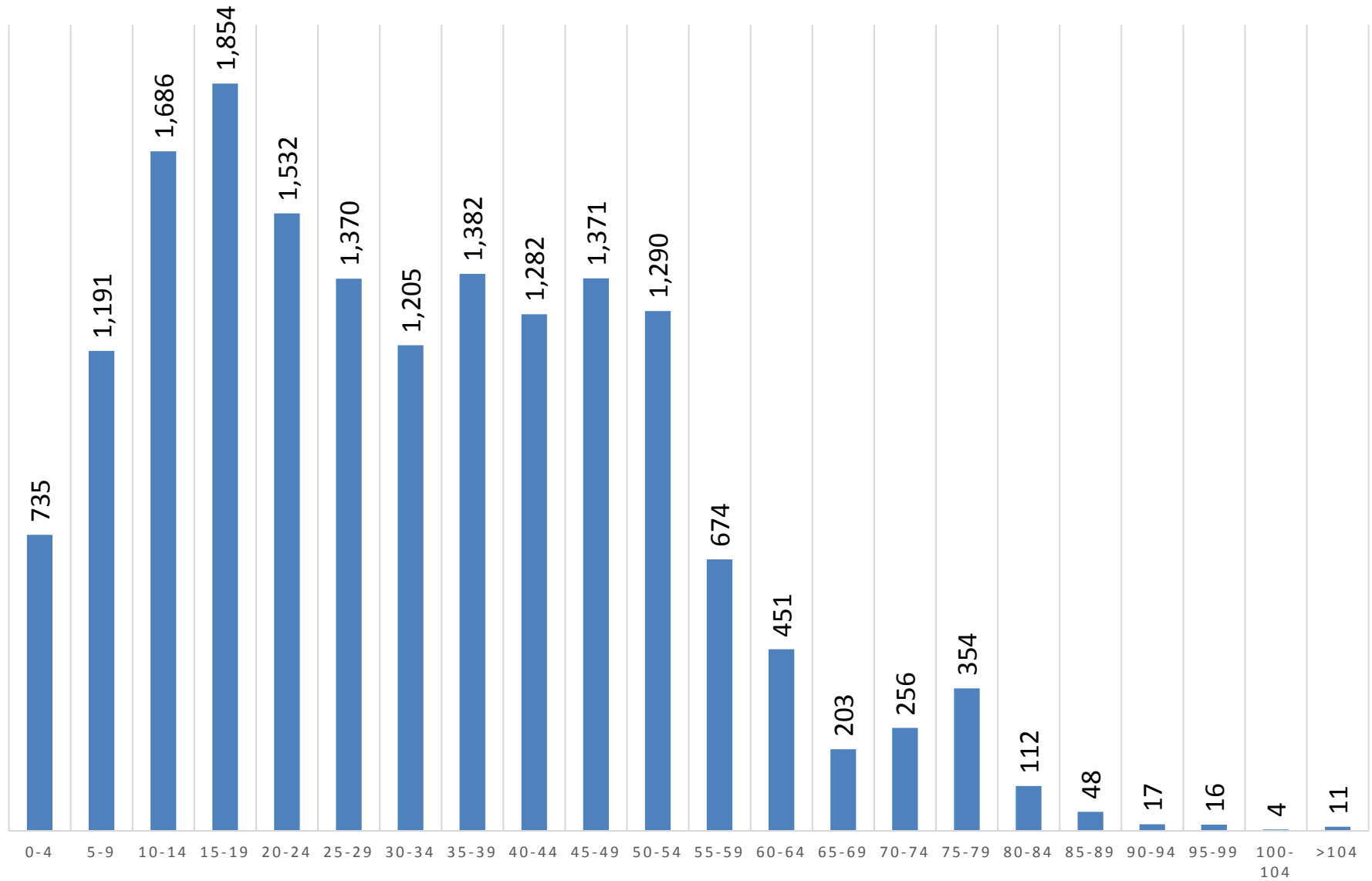


Note: ADT is not additive

## DISTRIBUTION OF BRIDGES IN MISSISSIPPI BY AGE OF BRIDGE 2013

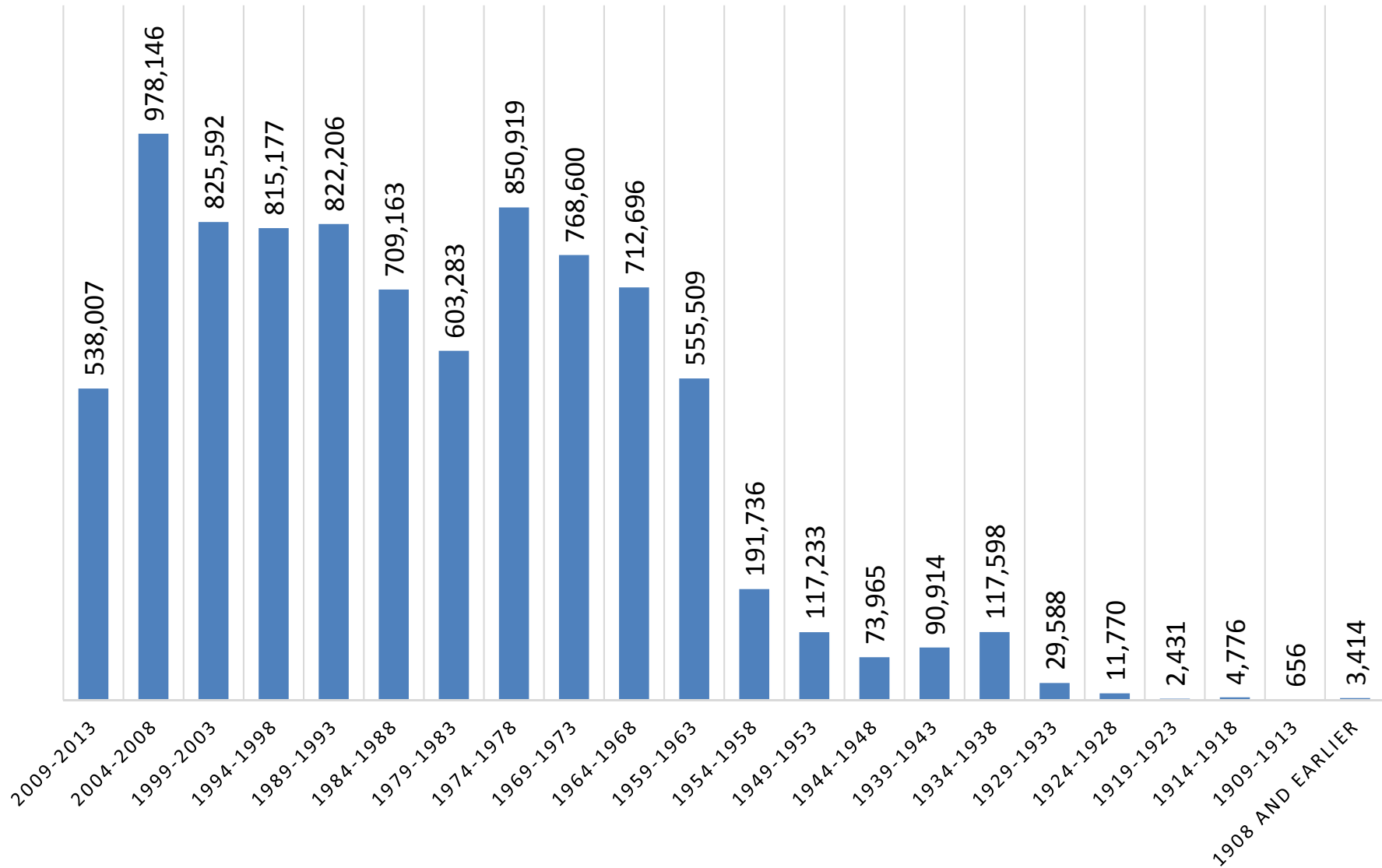
**TOTAL BRIDGES: 17,044**

*SOURCE: U.S. DEPARTMENT OF TRANSPORTATION*



## MISSISSIPPI BRIDGES IN SQUARE METERS BY YEAR BRIDGES WERE BUILT

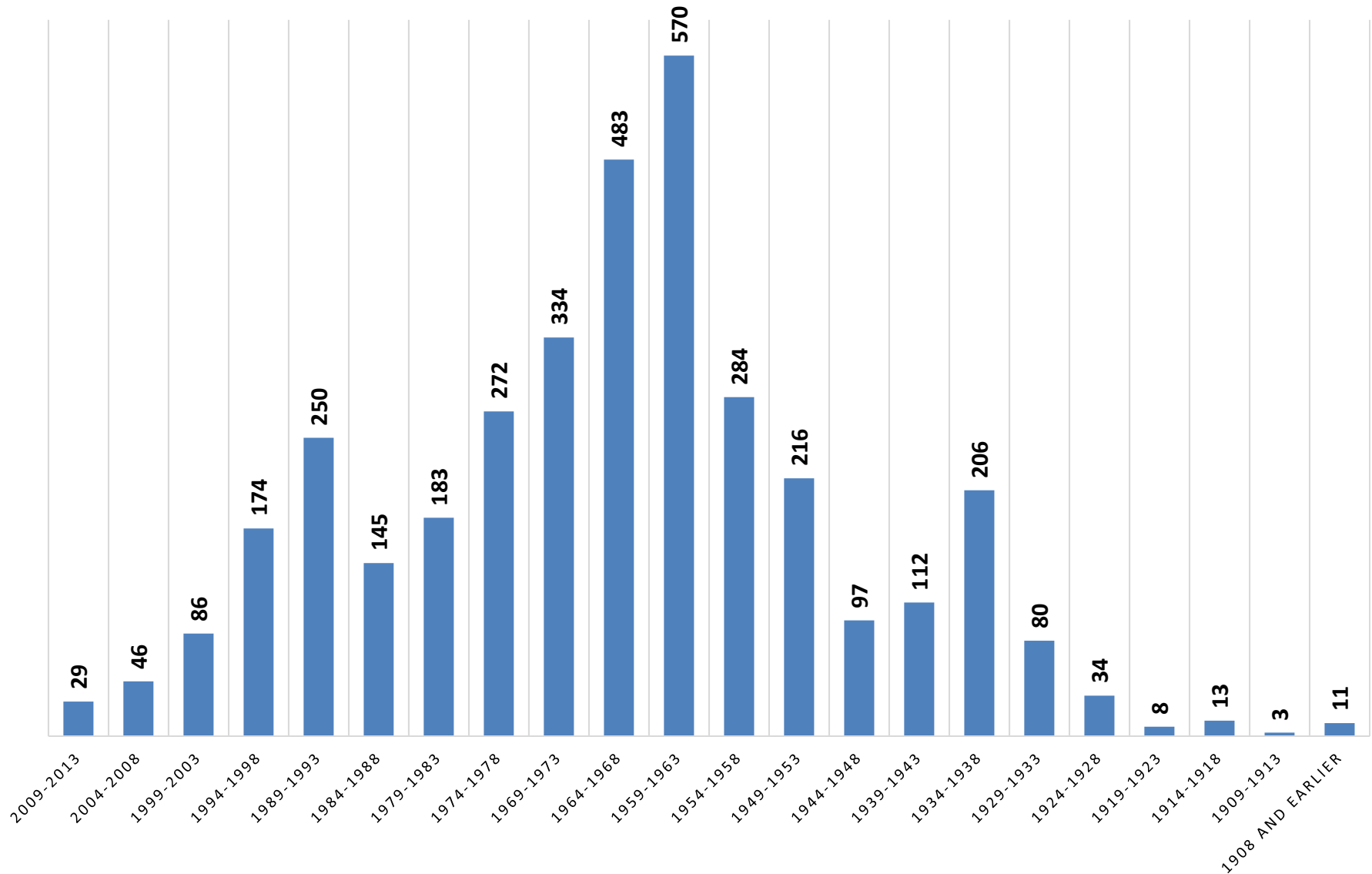
SOURCE: U.S. DEPARTMENT OF TRANSPORTATION



## ALL DEFICIENT BRIDGES IN MISSISSIPPI BY THE YEAR BUILT

**TOTAL: 3,636 AS OF 2013**

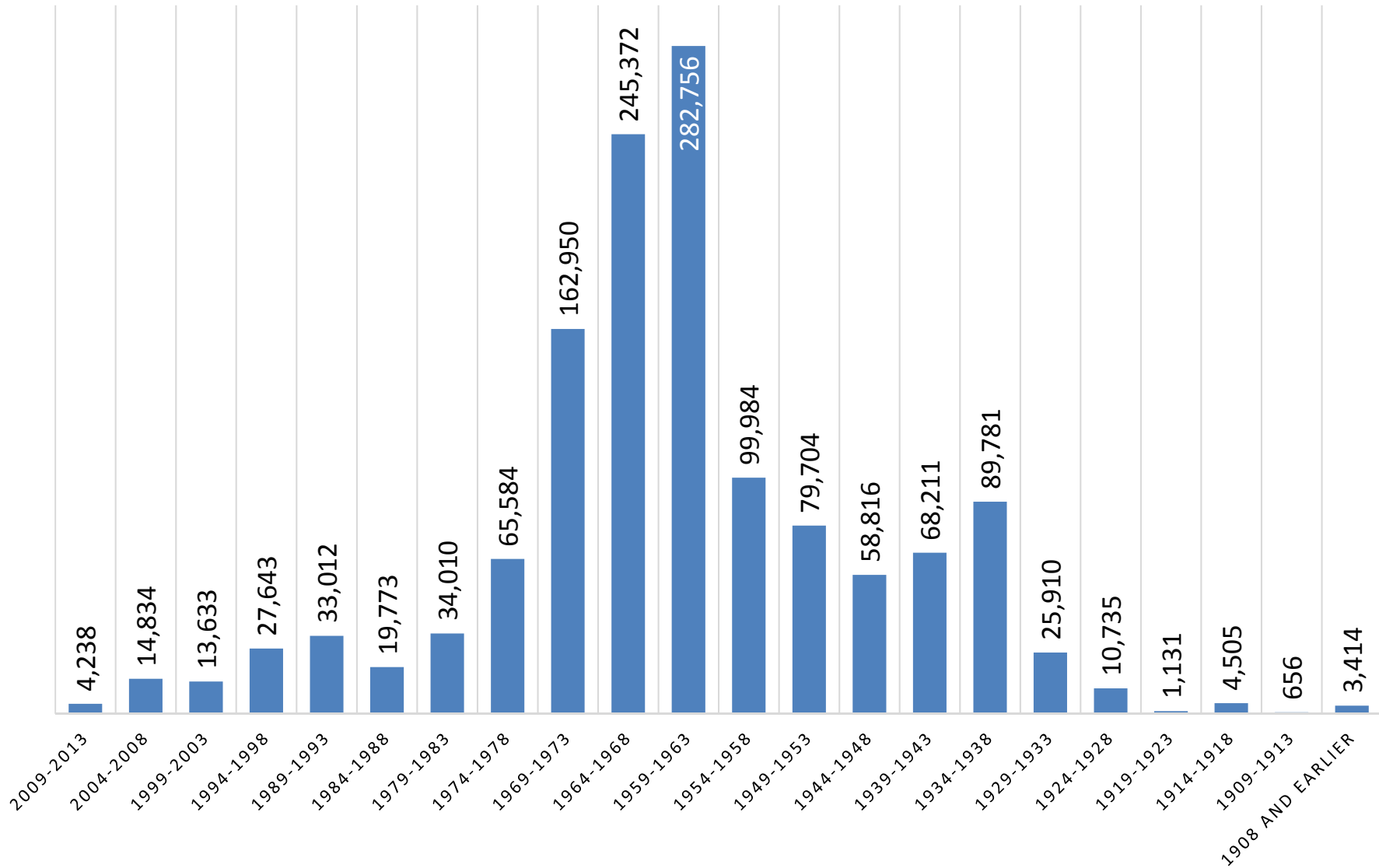
*SOURCE: U.S. DEPARTMENT OF TRANSPORTATION*



Deficient bridges includes those that are structurally deficient and those that are obsolete

## ALL DEFICIENT BRIDGES IN MISSISSIPPI BY THE YEAR BUILT EXPRESSED IN SQUARE METERS OF AREA

SOURCE: U.S. DEPARTMENT OF TRANSPORTATION

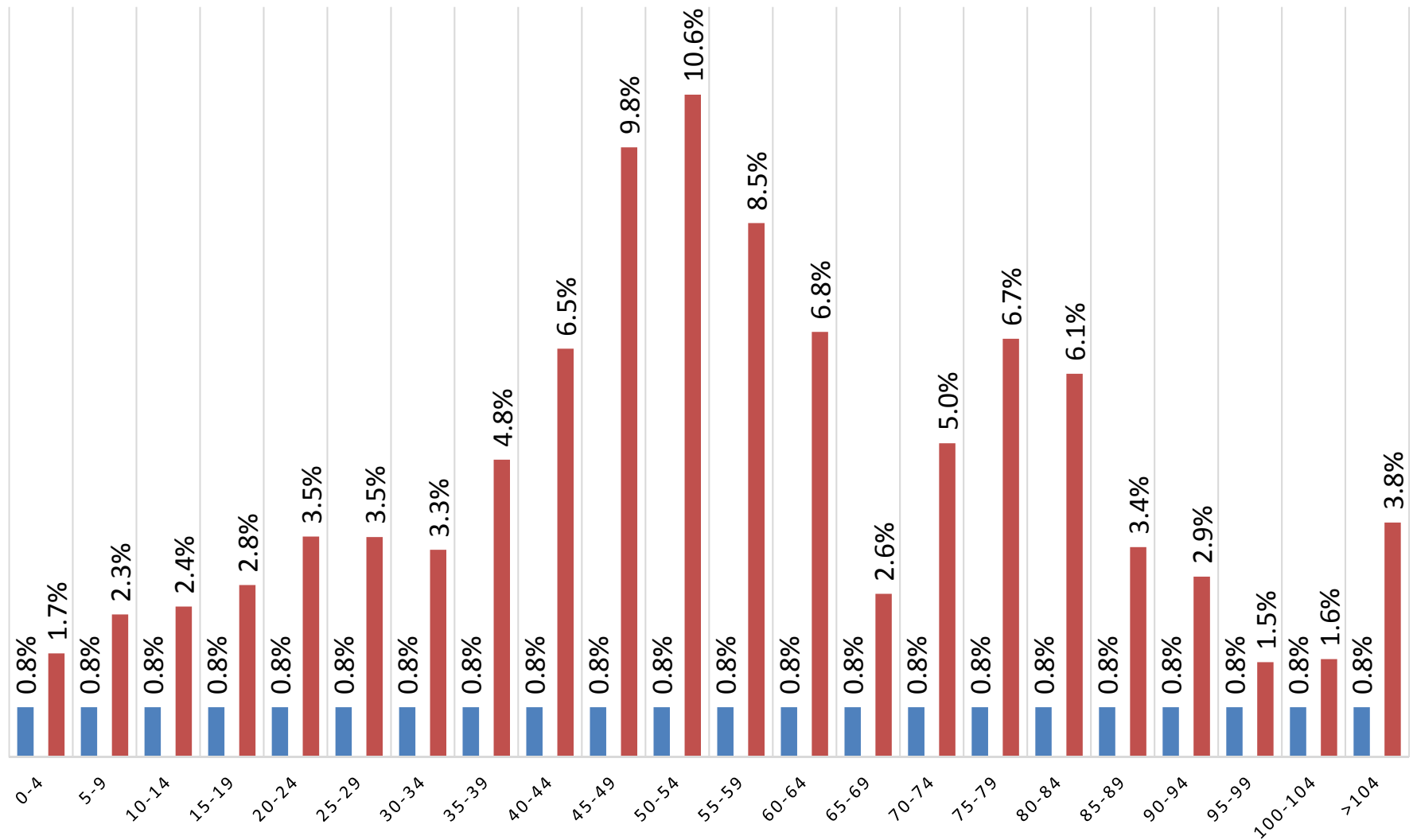


Deficient bridges includes those that are structurally deficient and those that are functionally obsolete

# PERCENT DISTRIBUTION OF DEFICIENT BRIDGES BY AGE OF BRIDGE COMPARISON OF MISSISSIPPI AND U.S. AS OF 12/2013

SOURCE: U.S. DEPARTMENT OF TRANSPORTATION

■ Mississippi Deficient Bridges ■ U.S. Deficient Bridges



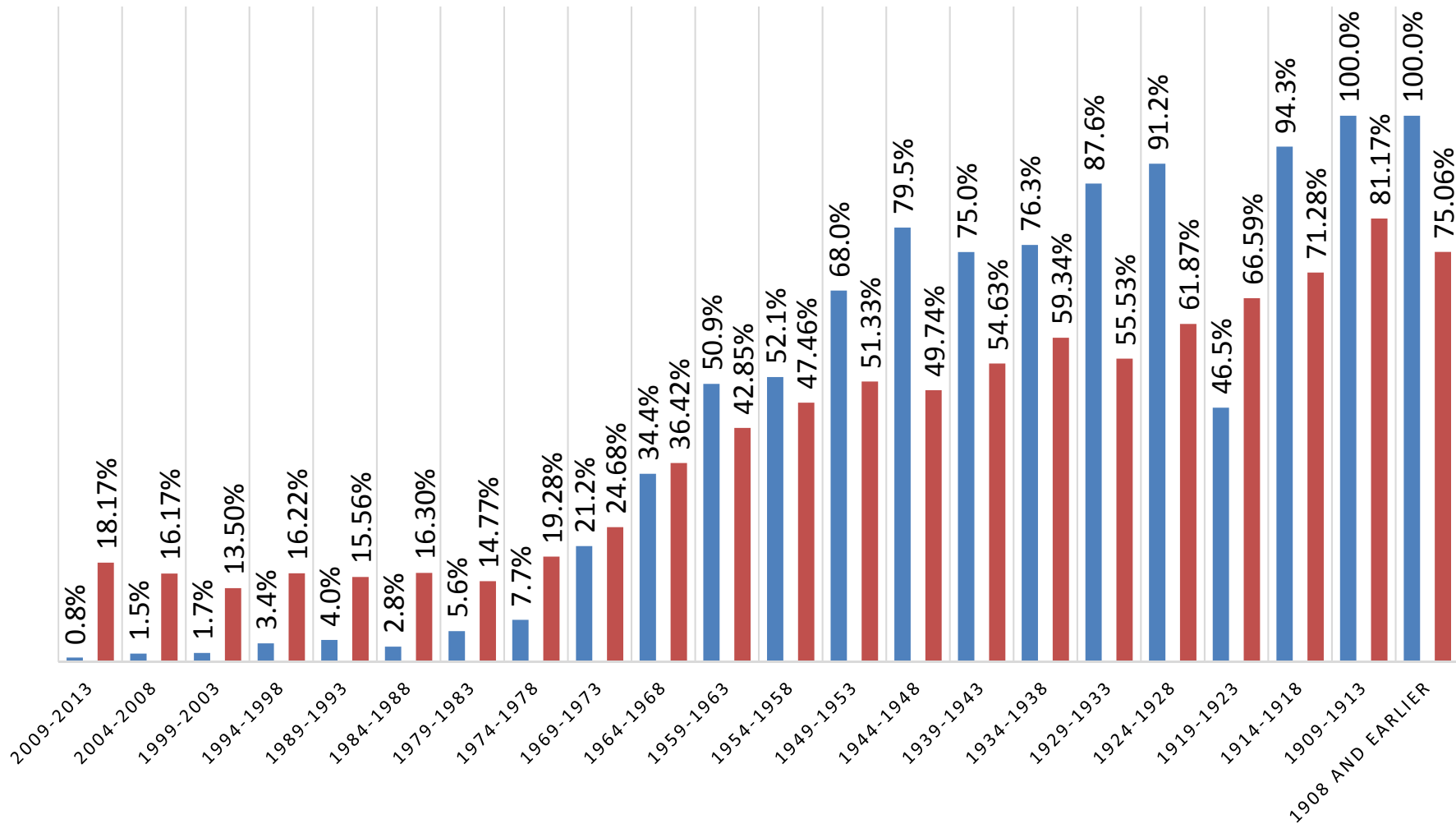
Deficient bridges include those that are structurally deficient and those that are functionally obsolete



# SQUARE METER AREA OF DEFICIENT BRIDGES BY THE YEAR BUILT EXPRESSED AS A PERCENTAGE OF THE TOTAL SQUARE METER AREA OF BRIDGES BUILT DURING THE TIME PERIOD

SOURCE: U.S. DEPARTMENT OF TRANSPORTATION

■ Mississippi Deficient Bridges ■ U.S. Deficient Bridges



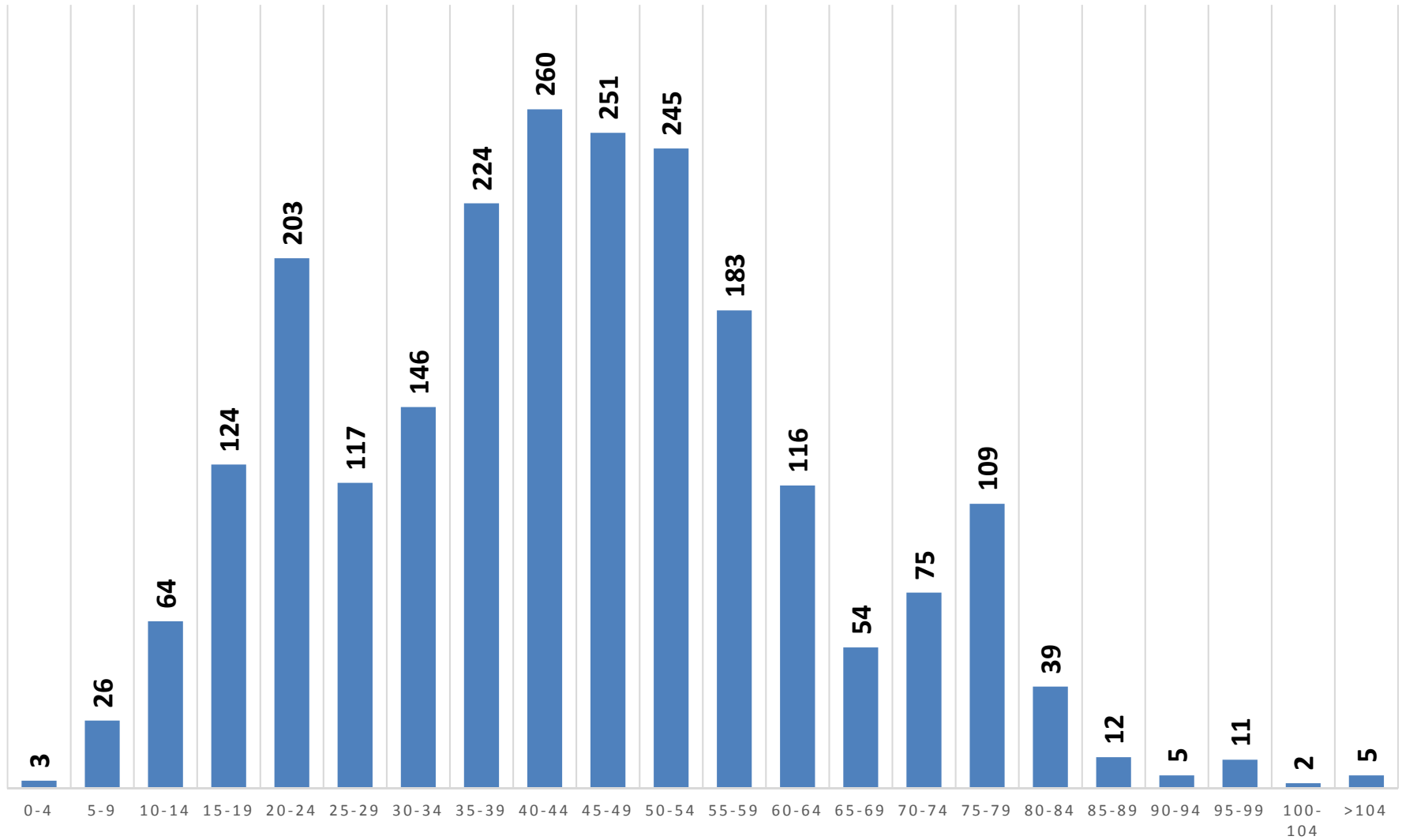
Example: During 2009 - 2013, the area associated with bridges constructed in Mississippi was 538,007 square meters; the area associated with deficient bridges constructed during this time was 4,238 square meters or 0.8 %. During the same time period, the area of bridges constructed in the U.S. was 17,766,017 square meters; the area of deficient bridges that were built from 2009 to 2013 was 3,228,158 square meters, or 18.17 %.

# MISSISSIPPI STRUCTURALLY DEFICIENT BRIDGES BY AGE OF BRIDGE

2013

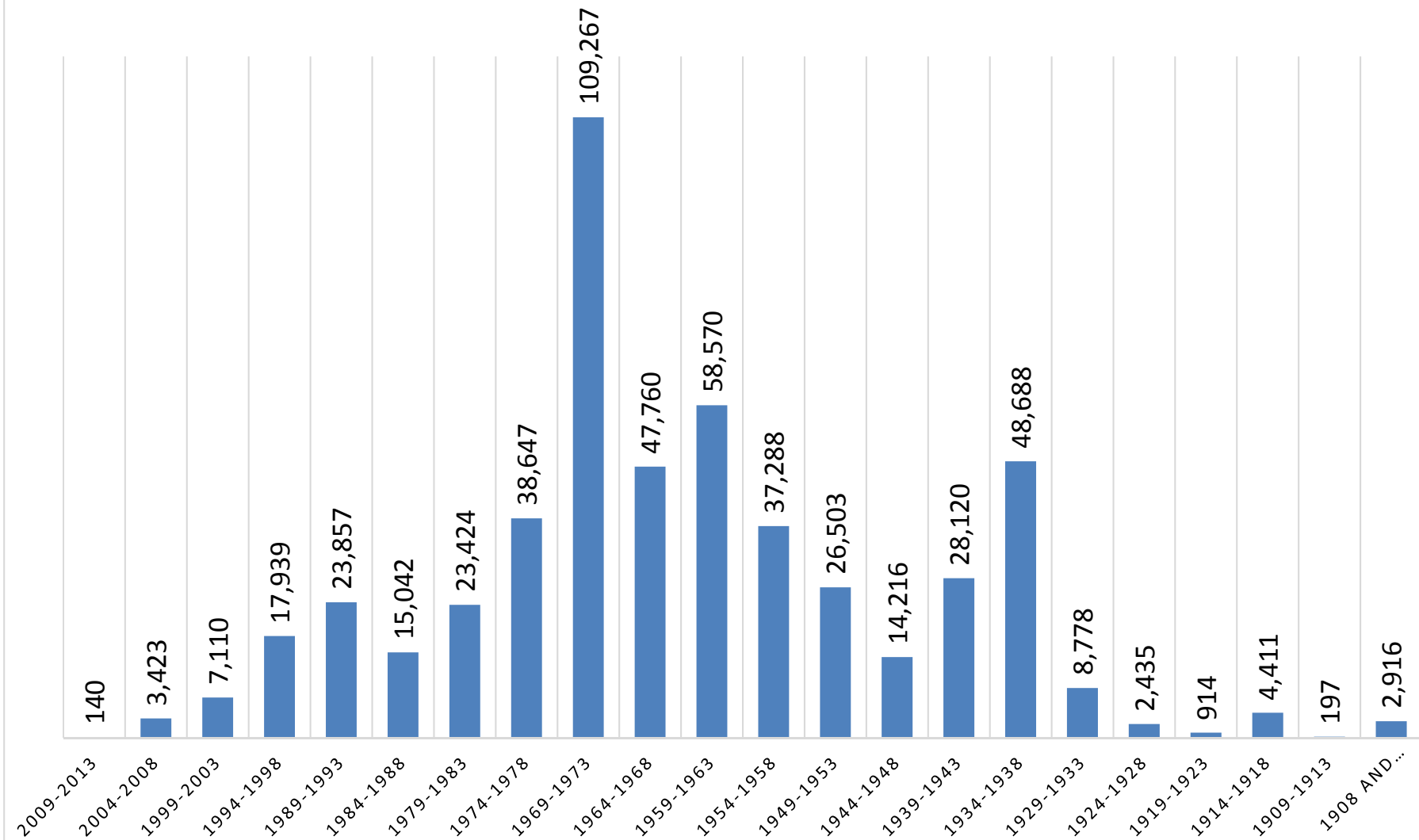
TOTAL: 2,274

SOURCE: U.S. DEPARTMENT OF TRANSPORTATION



# STRUCTURALLY DEFICIENT BRIDGES IN MISSISSIPPI BY THE YEAR BUILT EXPRESSED IN SQUARE METERS OF AREA

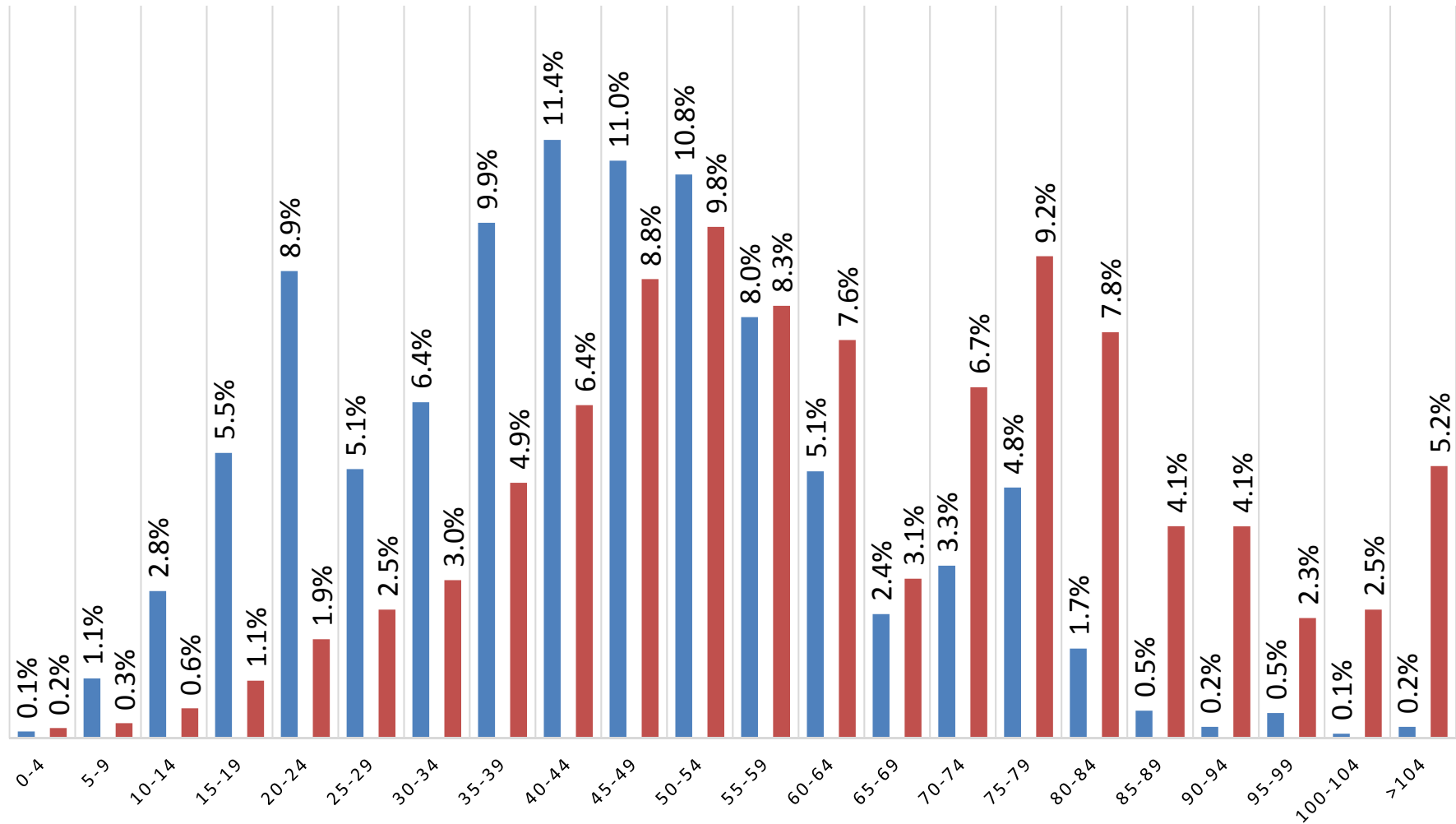
SOURCE: U.S. DEPARTMENT OF TRANSPORTATION



# PERCENT DISTRIBUTION OF STRUCTURALLY DEFICIENT BRIDGES BY AGE OF BRIDGE COMPARISON OF MISSISSIPPI AND U.S. AS OF 12/2013

SOURCE: U.S. DEPARTMENT OF TRANSPORTATION

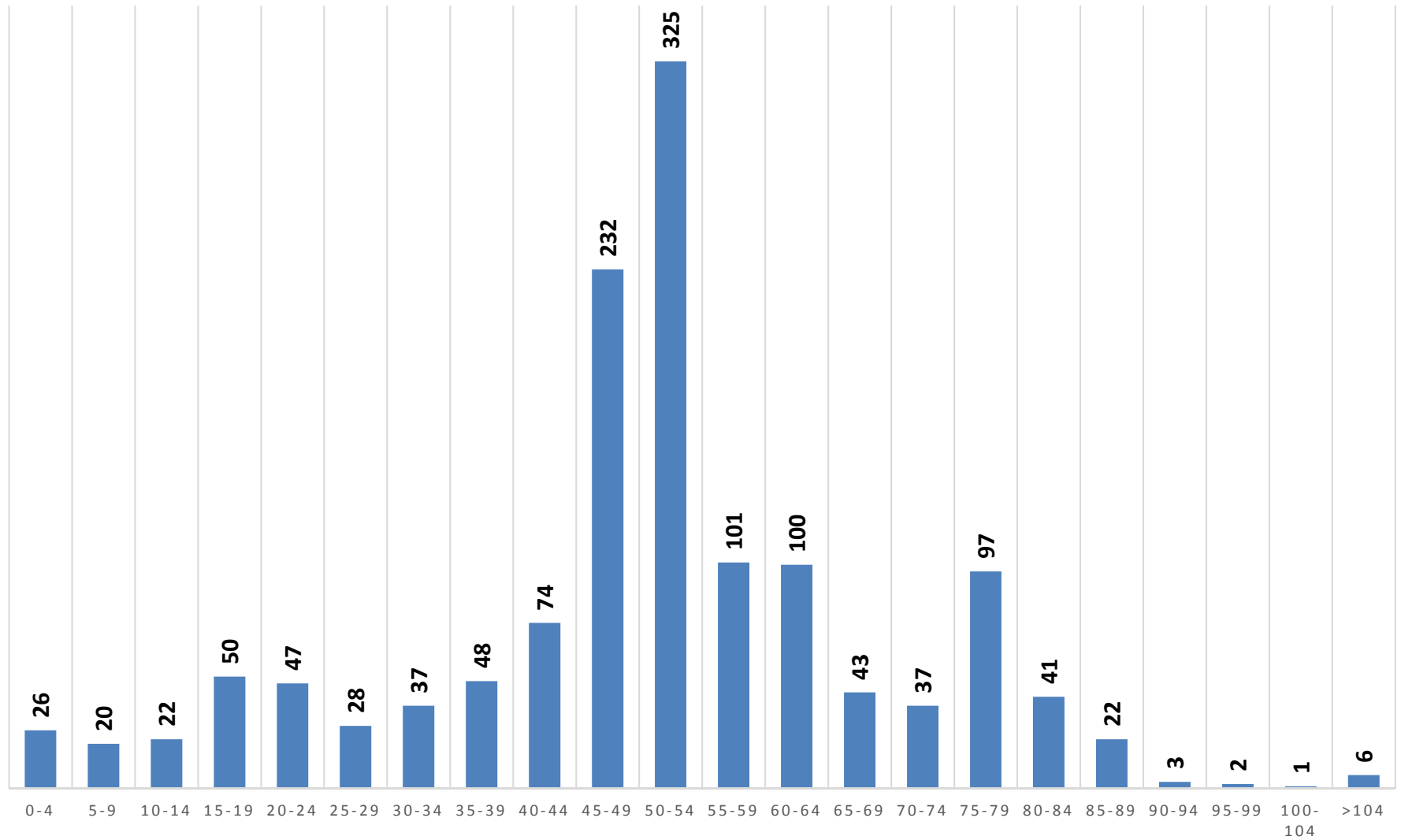
■ Mississippi Structurally Deficient Bridges ■ U.S. Structurally Deficient Bridges



# FUNCTIONALLY OBSOLETE BRIDGES IN MISSISSIPPI BY AGE OF BRIDGE 2013

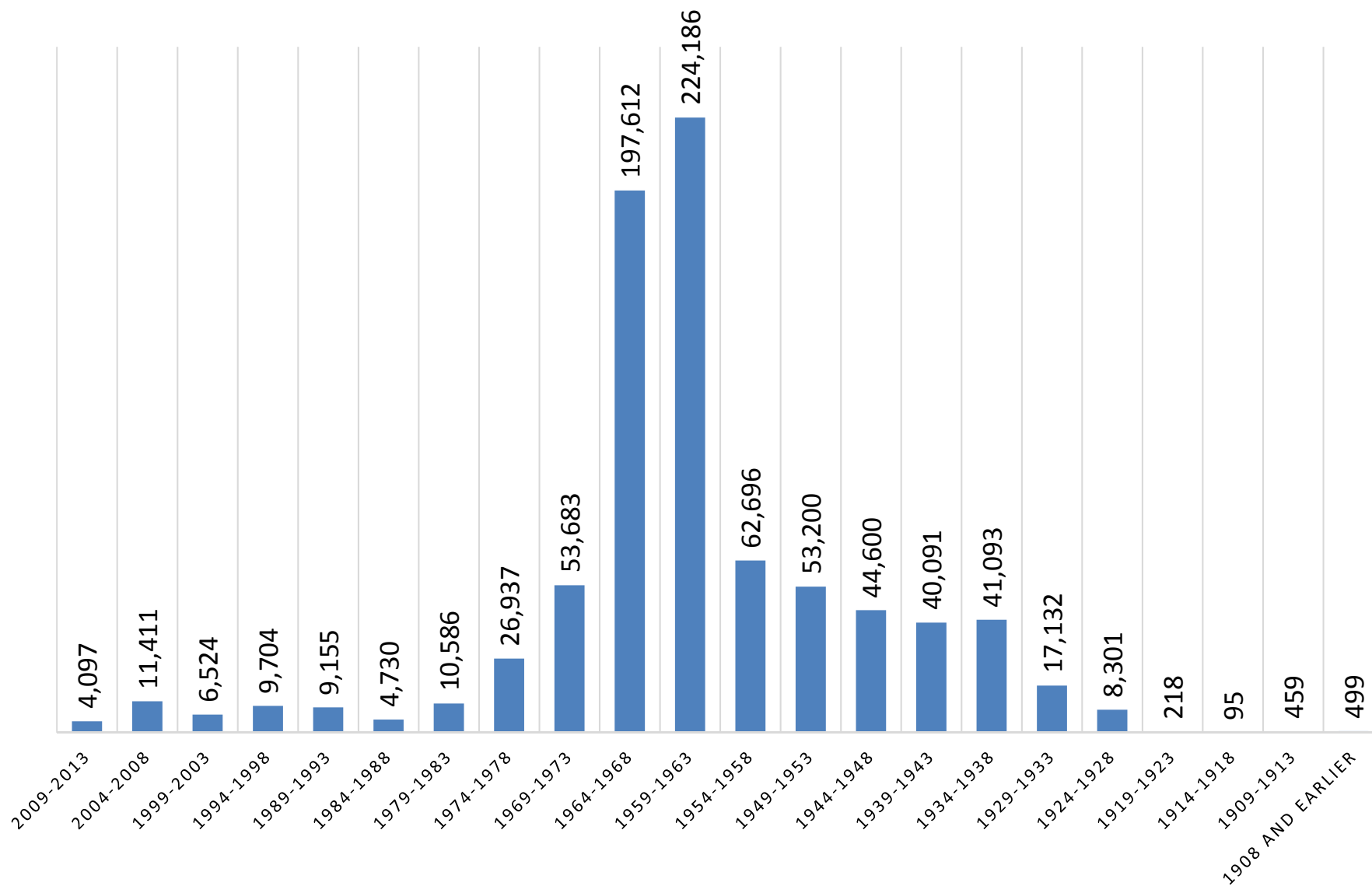
**TOTAL: 1,362**

*SOURCE: U.S. DEPARTMENT OF TRANSPORTATION*



## FUNCTIONALLY OBSOLETE BRIDGES IN MISSISSIPPI BY THE YEAR BUILT EXPRESSED IN SQUARE METERS OF AREA

SOURCE: U.S. DEPARTMENT OF TRANSPORTATION

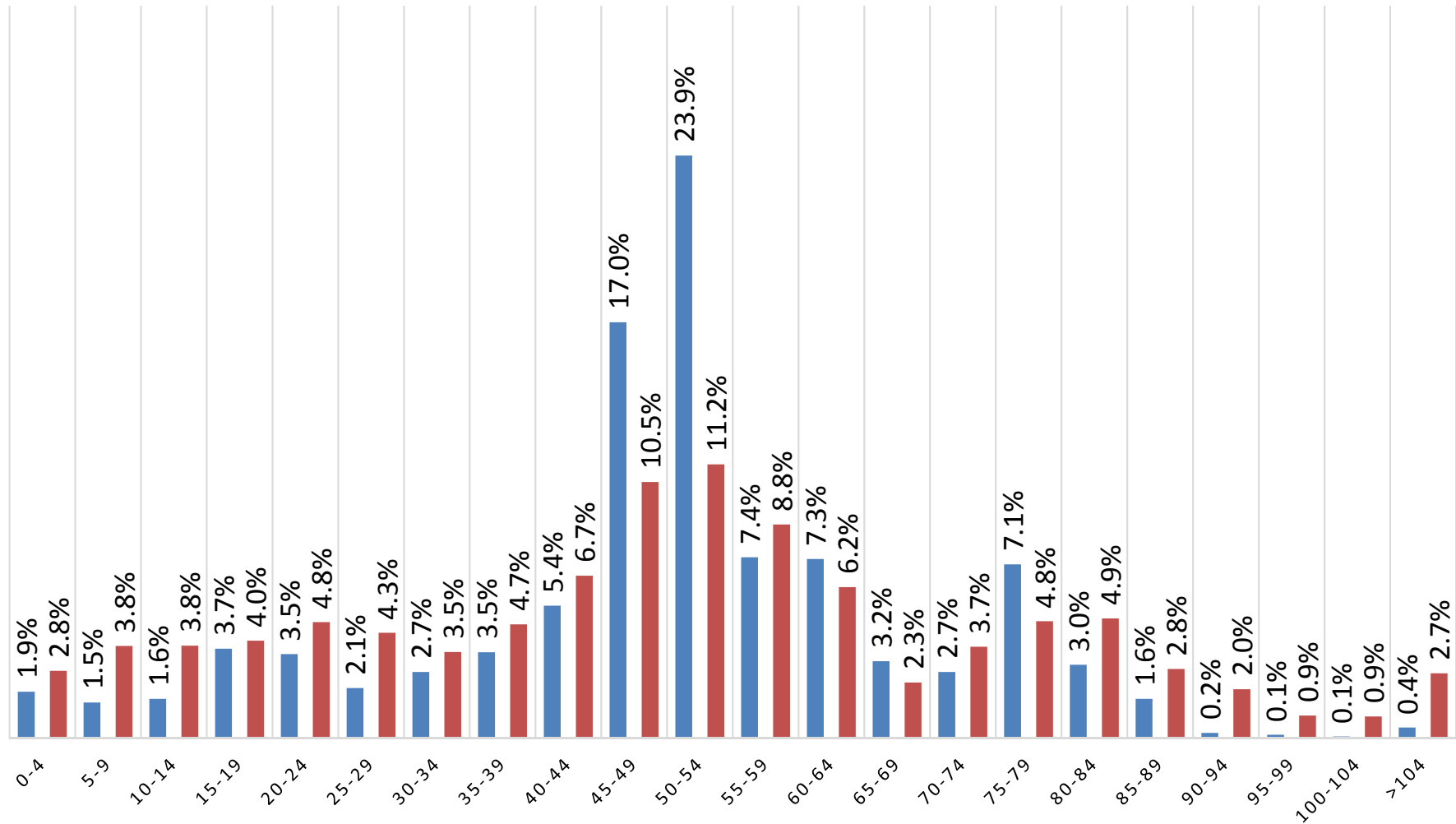


# PERCENT DISTRIBUTION OF FUNCTIONALLY OBSOLETE BRIDGES BY AGE OF BRIDGE

## COMPARISON OF MISSISSIPPI AND U.S. AS OF 12/2013

SOURCE: U.S. DEPARTMENT OF TRANSPORTATION

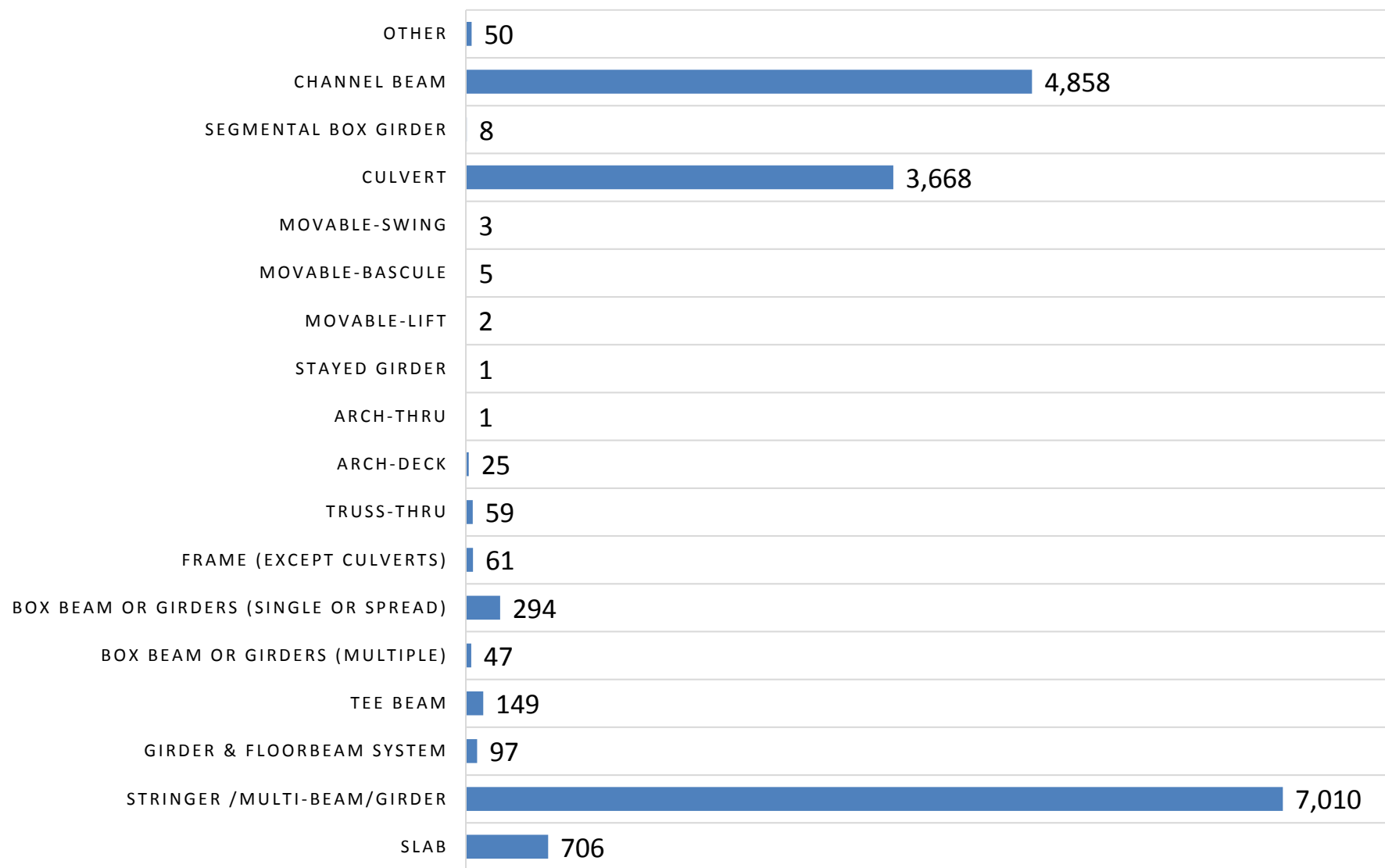
■ Mississippi Functionally Obsolete Bridges ■ U.S. Functionally Obsolete Bridges



## MISSISSIPPI BRIDGES BY STRUCTURE TYPE

**TOTAL BRIDGES: 17,044 AS OF 12/2013**

*SOURCE: U.S. DEPARTMENT OF TRANSPORTATION*

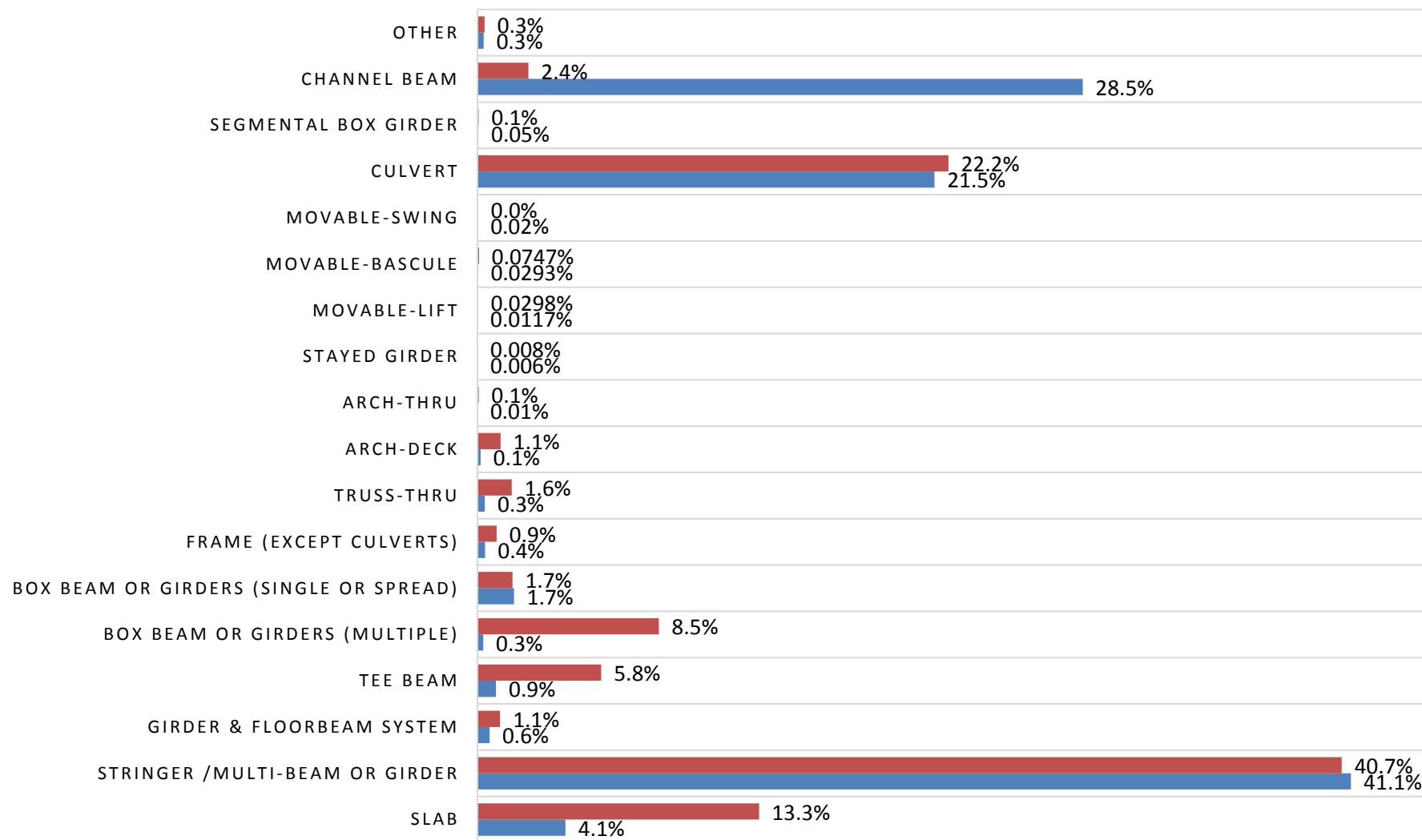




# PERCENT DISTRIBUTION OF TOTAL BRIDGES BY STRUCTURE TYPE COMPARISON OF MISSISSIPPI AND U.S. AS OF 12/2013

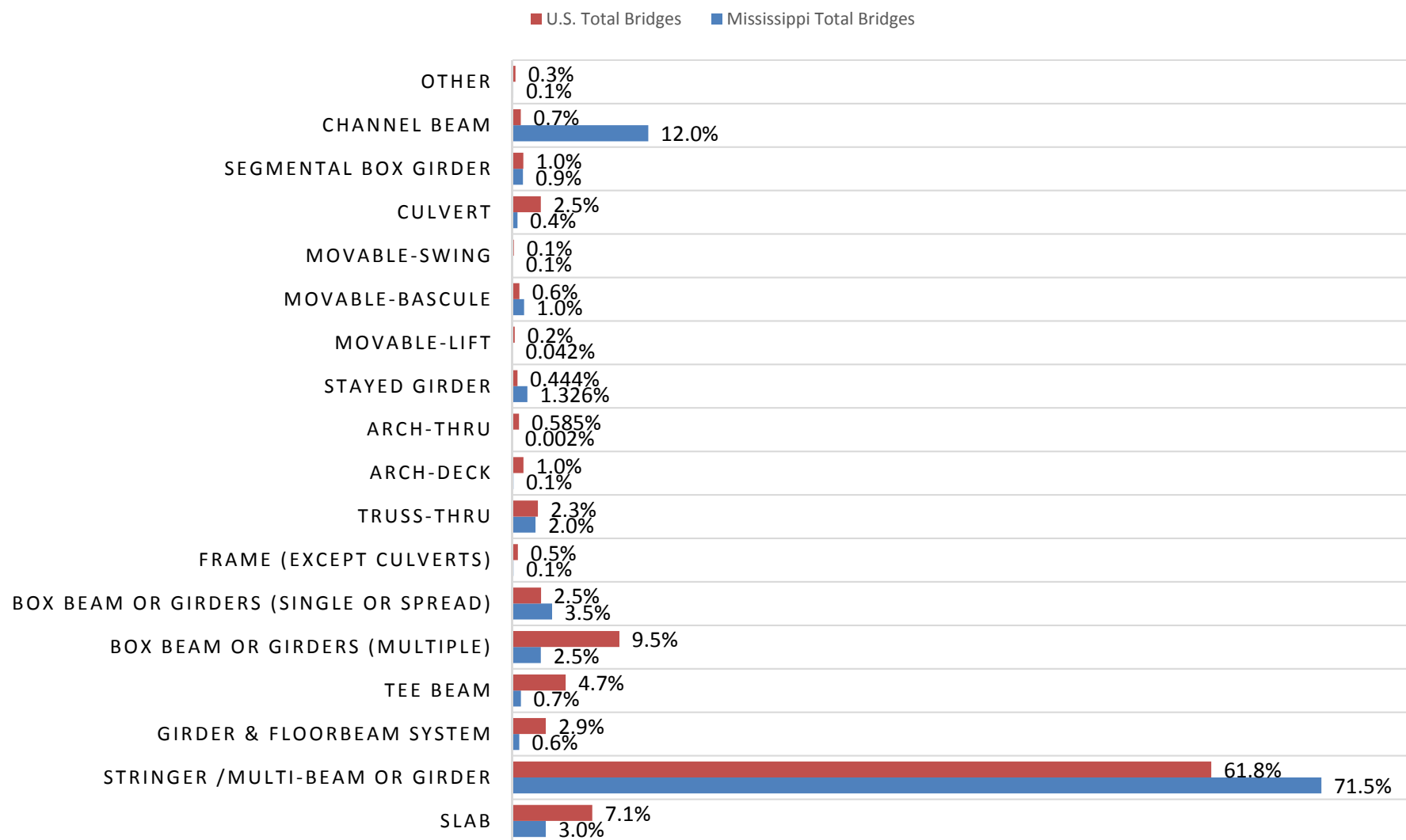
SOURCE: U.S. DEPARTMENT OF TRANSPORTATION

■ U.S. Total Bridges ■ Mississippi Total Bridges



# PERCENT DISTRIBUTION OF TOTAL BRIDGES BY STRUCTURE TYPE EXPRESSED IN SQUARE METERS OF AREA COMPARISON OF MISSISSIPPI AND U.S. AS OF 12/2013

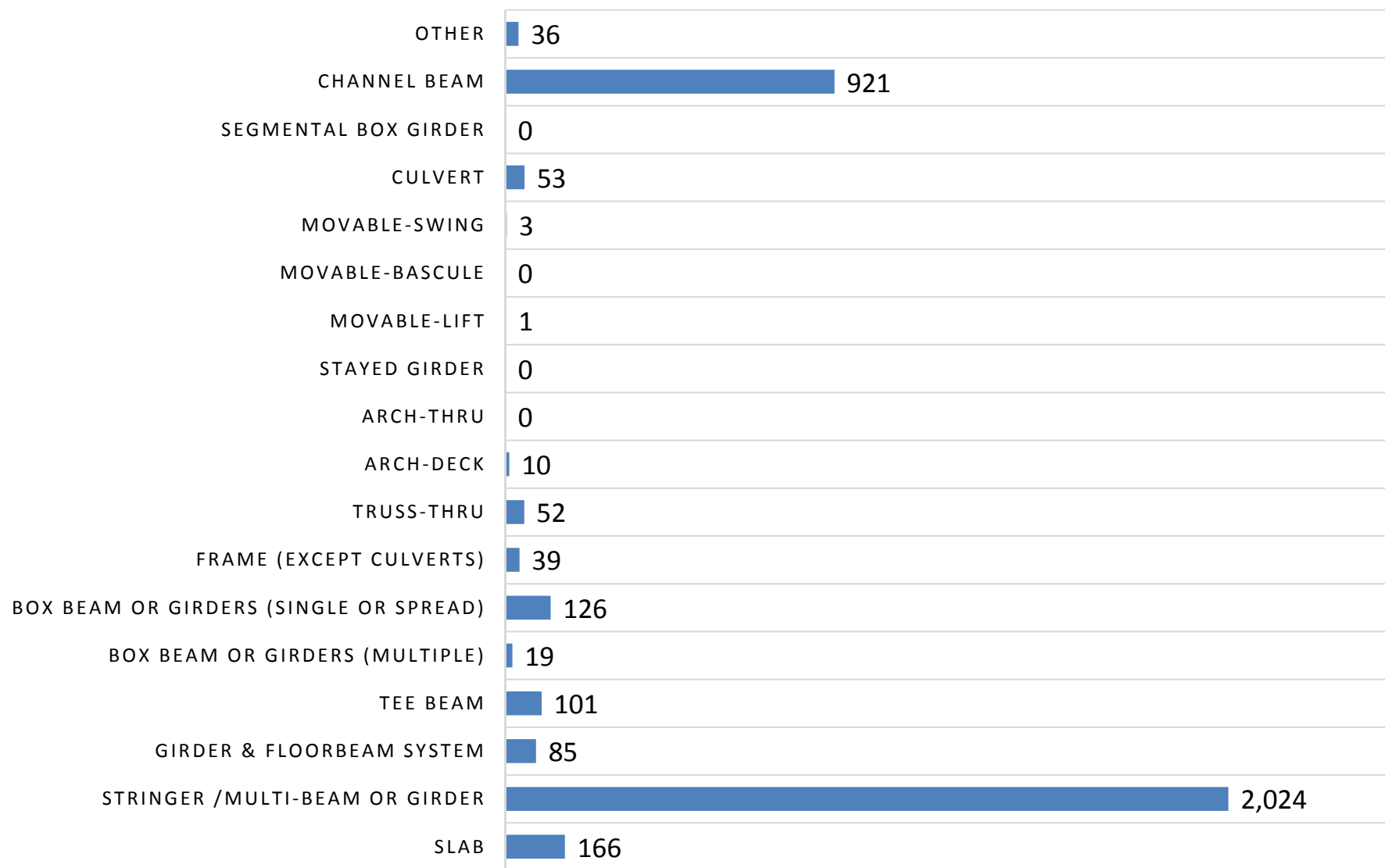
SOURCE: U.S. DEPARTMENT OF TRANSPORTATION



## MISSISSIPPI DEFICIENT BRIDGES BY STRUCTURE TYPE

**TOTAL: 3,636 AS OF 12/2013**

*SOURCE: U.S. DEPARTMENT OF TRANSPORTATION*



Deficient bridges includes those that are structurally deficient and those that are functionally obsolete

Structural types not include: Arch-Thru, Styed Girder, Moveable lift, Moveable-Swing, Segmental Box Girder, and "Other" due to relatively low number of bridges

## MISSISSIPPI BRIDGES BY STRUCTURAL TYPE

**TOTAL: 17,044**

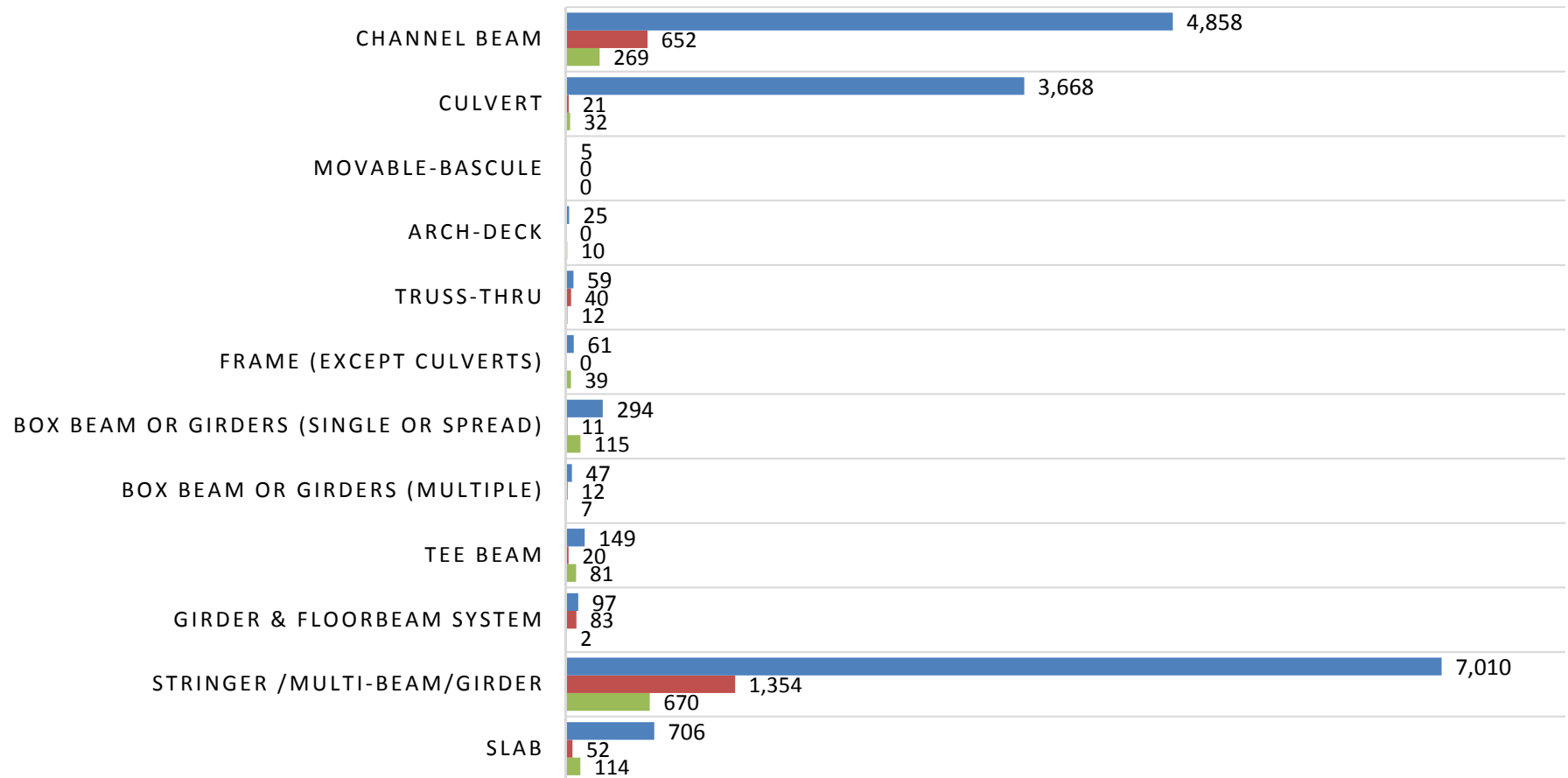
**STRUCTURALLY DEFICIENT: 2,274**

**FUNCTIONALLY OBSOLETE: 1,362**

**TOTAL DEFICIENT: 3,636**

*SOURCE: U.S. DEPARTMENT OF TRANSPORTATION*

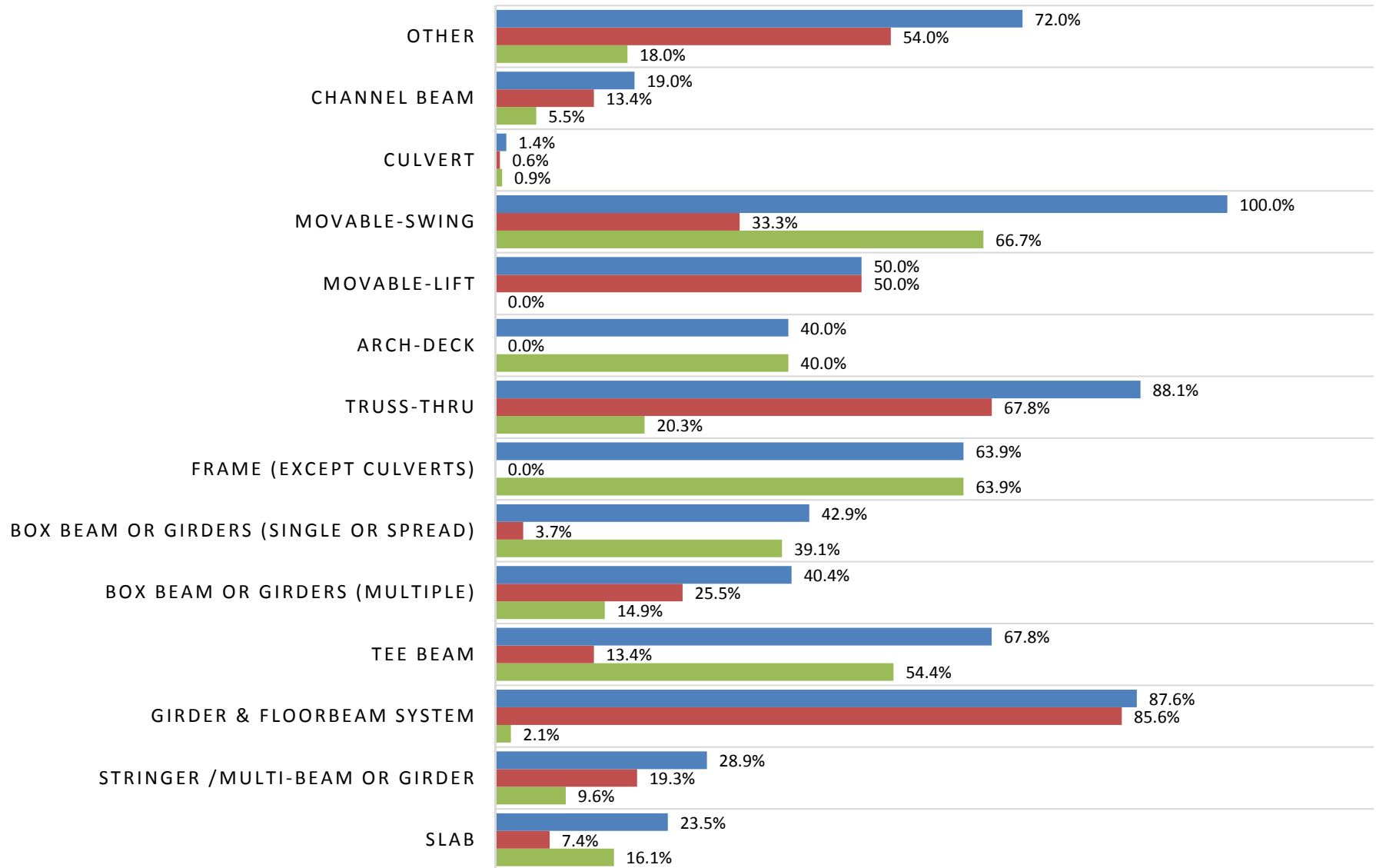
■ Total bridges ■ Structurally Deficient ■ Functionally Obsolete



Structural types not shown due to zero percent deficient: Arch-Thru, Stayed Girder, Movable- Bascule, Segmental Box Girder

## DEFICIENT BRIDGES IN MISSISSIPPI BY STRUCTURAL TYPE

■ Percent Deficient    ■ Percent Structurally Deficient    ■ Percent Functionally Obsolete

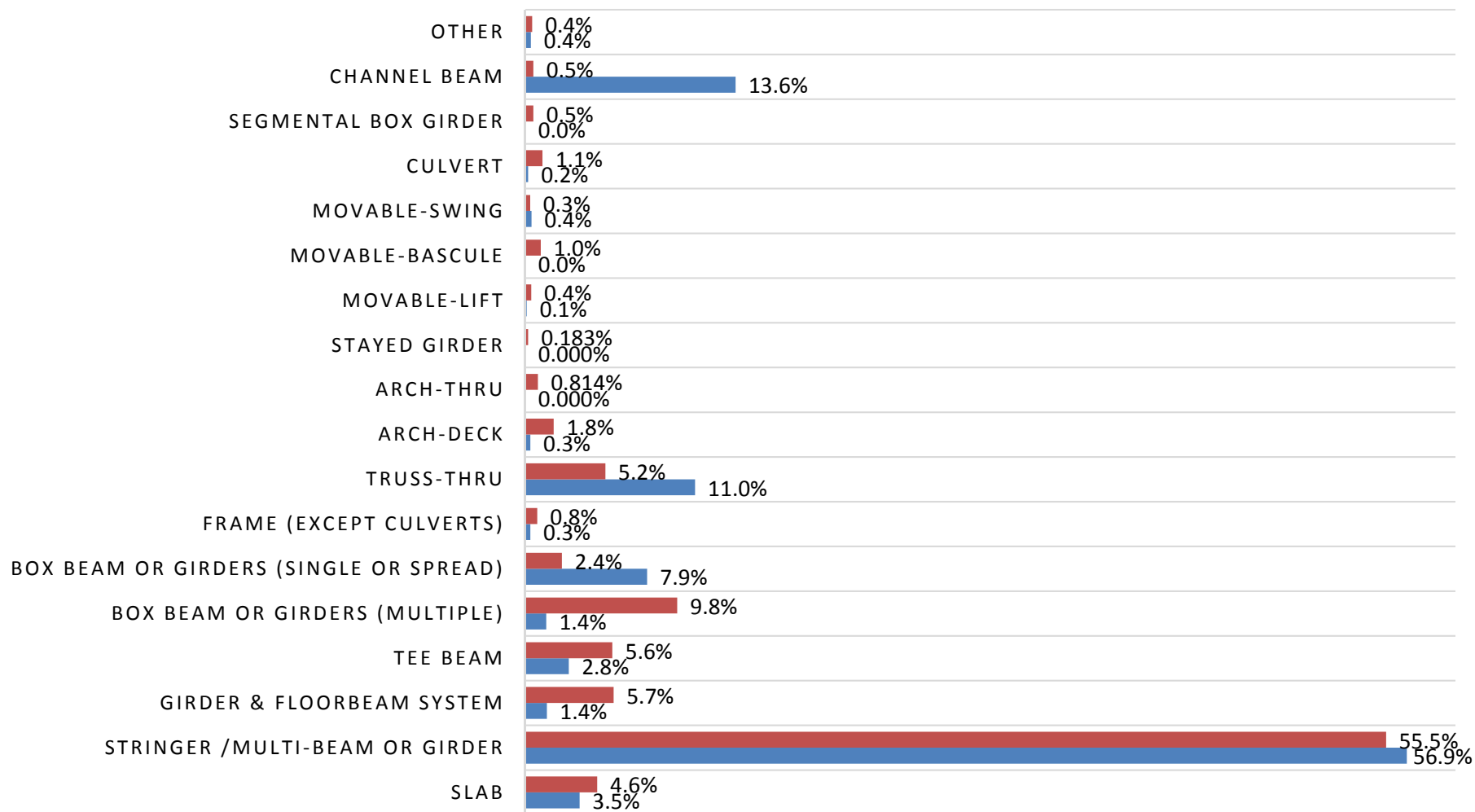


21.3 percent of all bridges in Mississippi are deficient (3,636 deficient bridges; of these, 2,274 are structurally deficient (13.3 percent) and 1,362 bridges are functionally obsolete (8.0 percent))

# PERCENT DISTRIBUTION OF DEFICIENT BRIDGES BY STRUCTURE TYPE EXPRESSED IN SQUARE METERS OF AREA COMPARISON OF MISSISSIPPI AND U.S. AS OF 12/2013

SOURCE: U.S. DEPARTMENT OF TRANSPORTATION

■ U.S. Deficient Bridges ■ Mississippi Deficient Bridges

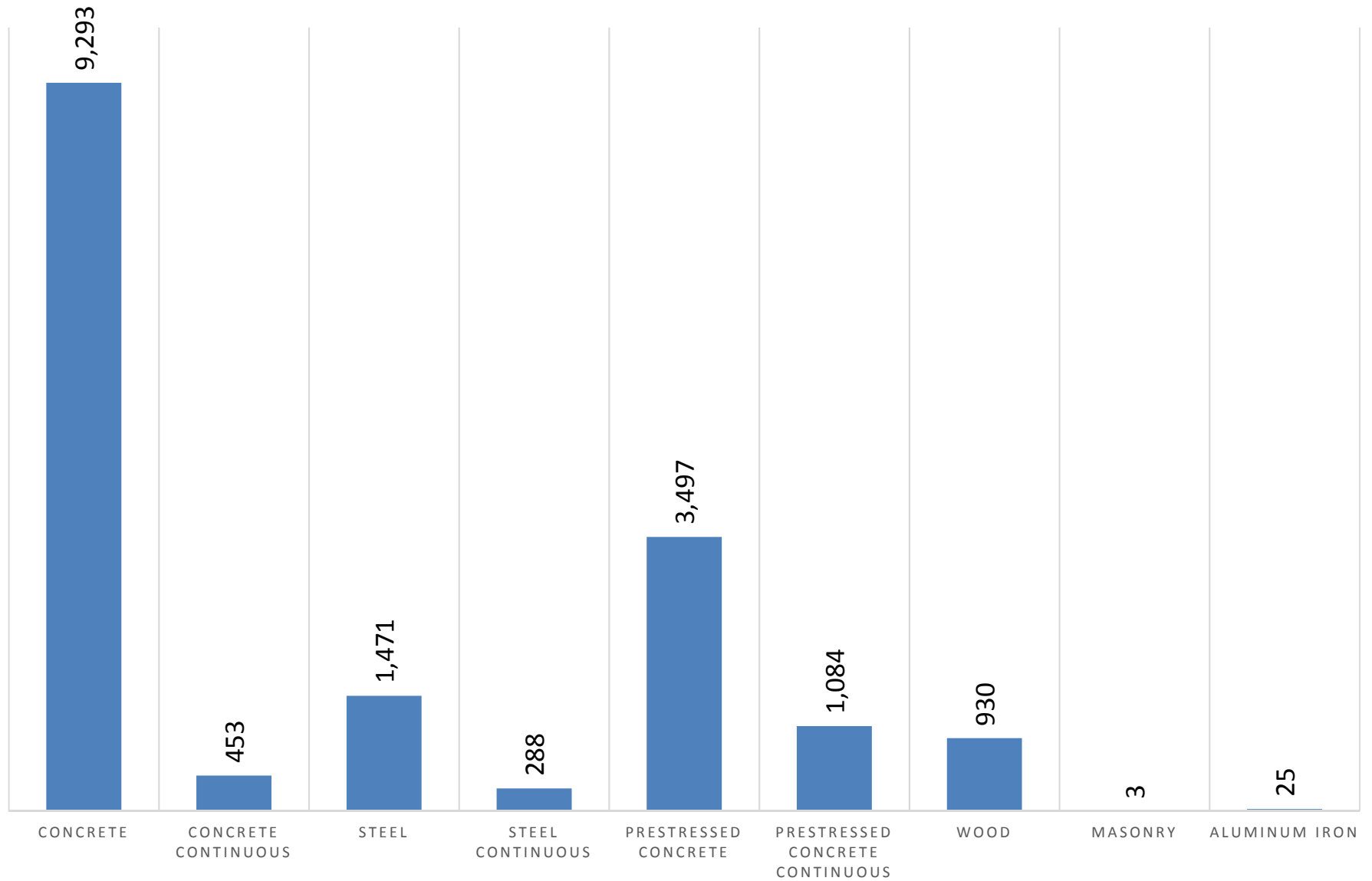


Deficient bridges includes those that are structurally deficient and those that are functionally obsolete

## MISSISSIPPI BRIDGES BY MATERIAL TYPE AS OF 12/29/13

**TOTAL BRIDGES: 17,044**

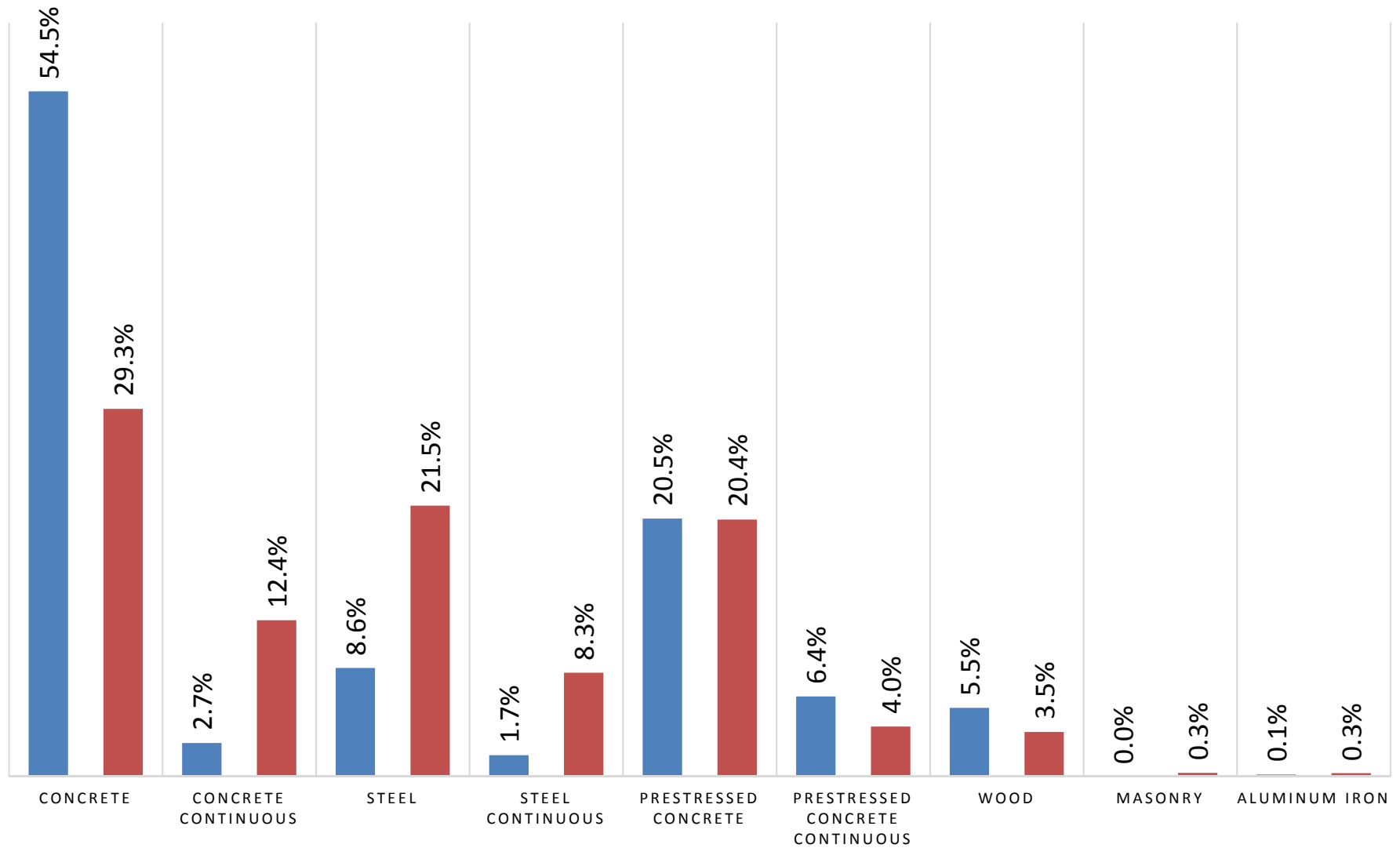
*SOURCE: U.S. DEPARTMENT OF TRANSPORTATION*



# PERCENT DISTRIBUTION OF BRIDGES BY MATERIAL TYPE MISSISSIPPI AND THE UNITED STATES AS OF 12/2013

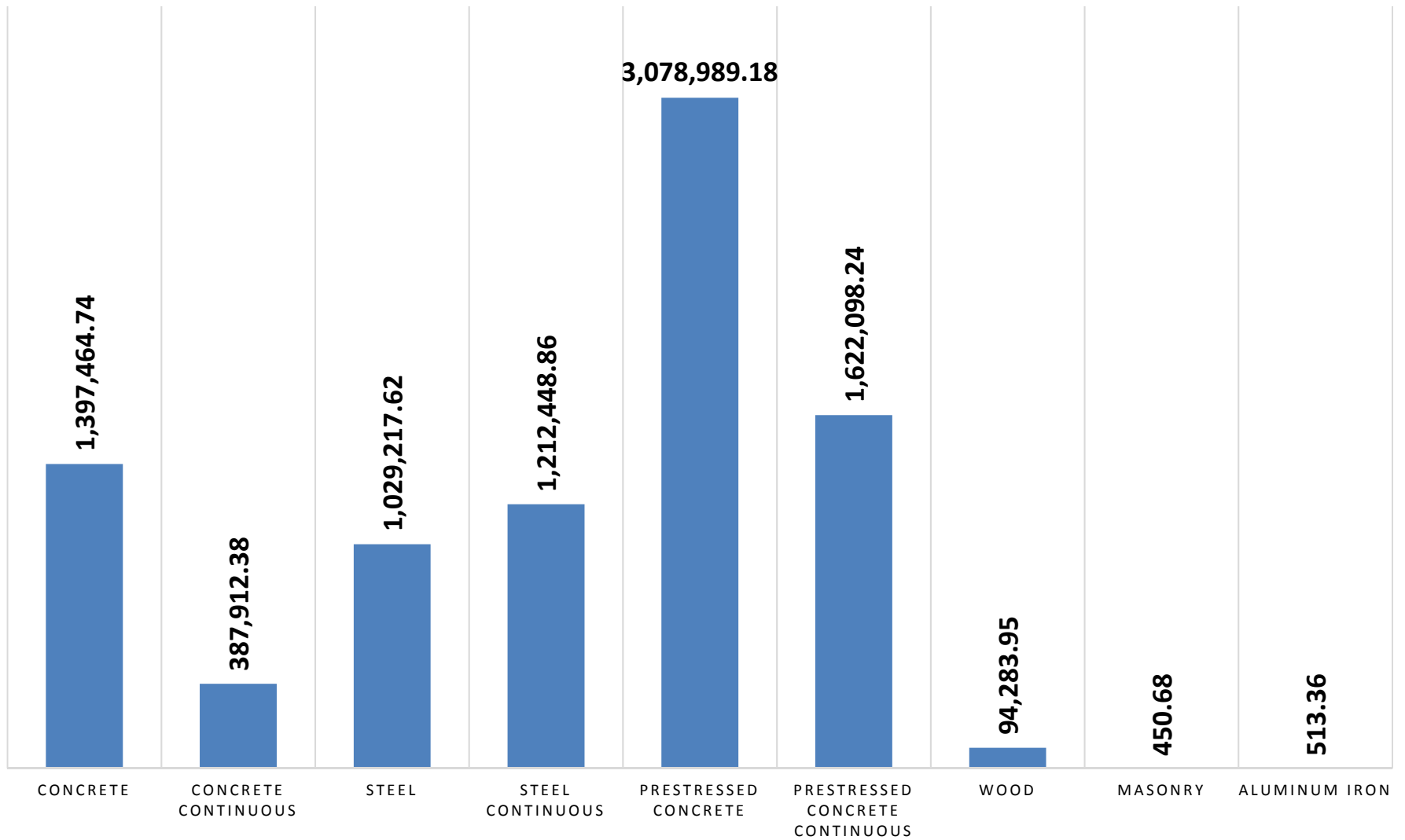
SOURCE: U.S. DEPARTMENT OF TRANSPORTATION

■ Mississippi Bridges ■ U.S. Bridges





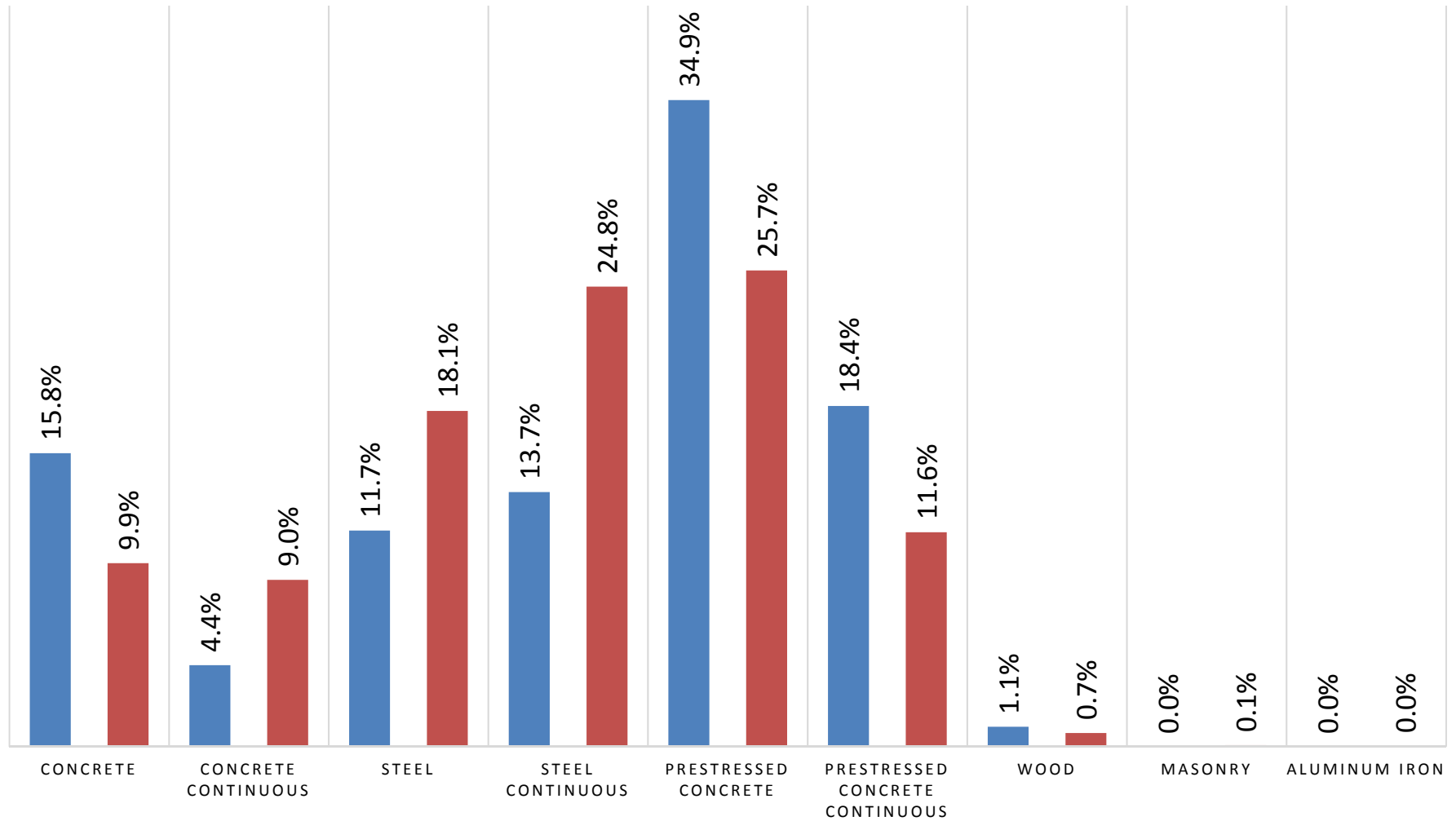
**MISSISSIPPI BRIDGES BY MATERIAL TYPE**  
**EXPRESSED IN SQUARE METERS**  
**TOTAL: 8,832,370.01 SQUARE METERS AS OF 12/2013**  
*SOURCE: U.S. DEPARTMENT OF TRANSPORTATION*



**PERCENT DISTRIBUTION OF BRIDGES BY MATERIAL TYPE  
EXPRESSED IN SQUARE METERS  
MISSISSIPPI AND THE U.S AS OF 12/2013**

*SOURCE: U.S. DEPARTMENT OF TRANSPORTATION*

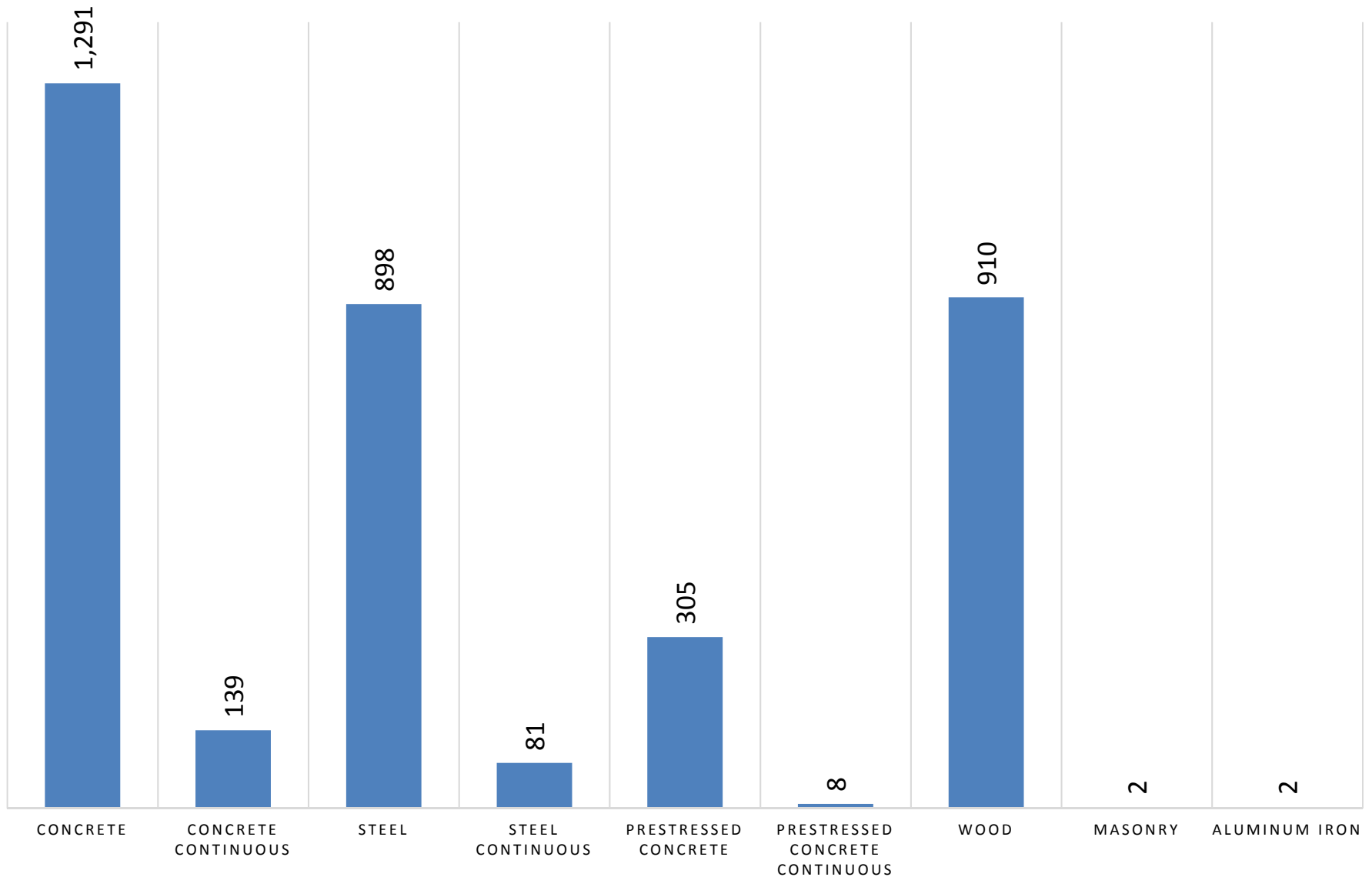
■ Mississippi Bridges ■ U.S. Bridges



## MISSISSIPPI DEFICIENT BRIDGES BY MATERIAL TYPE

**TOTAL: 3,636 AS OF 12/2013**

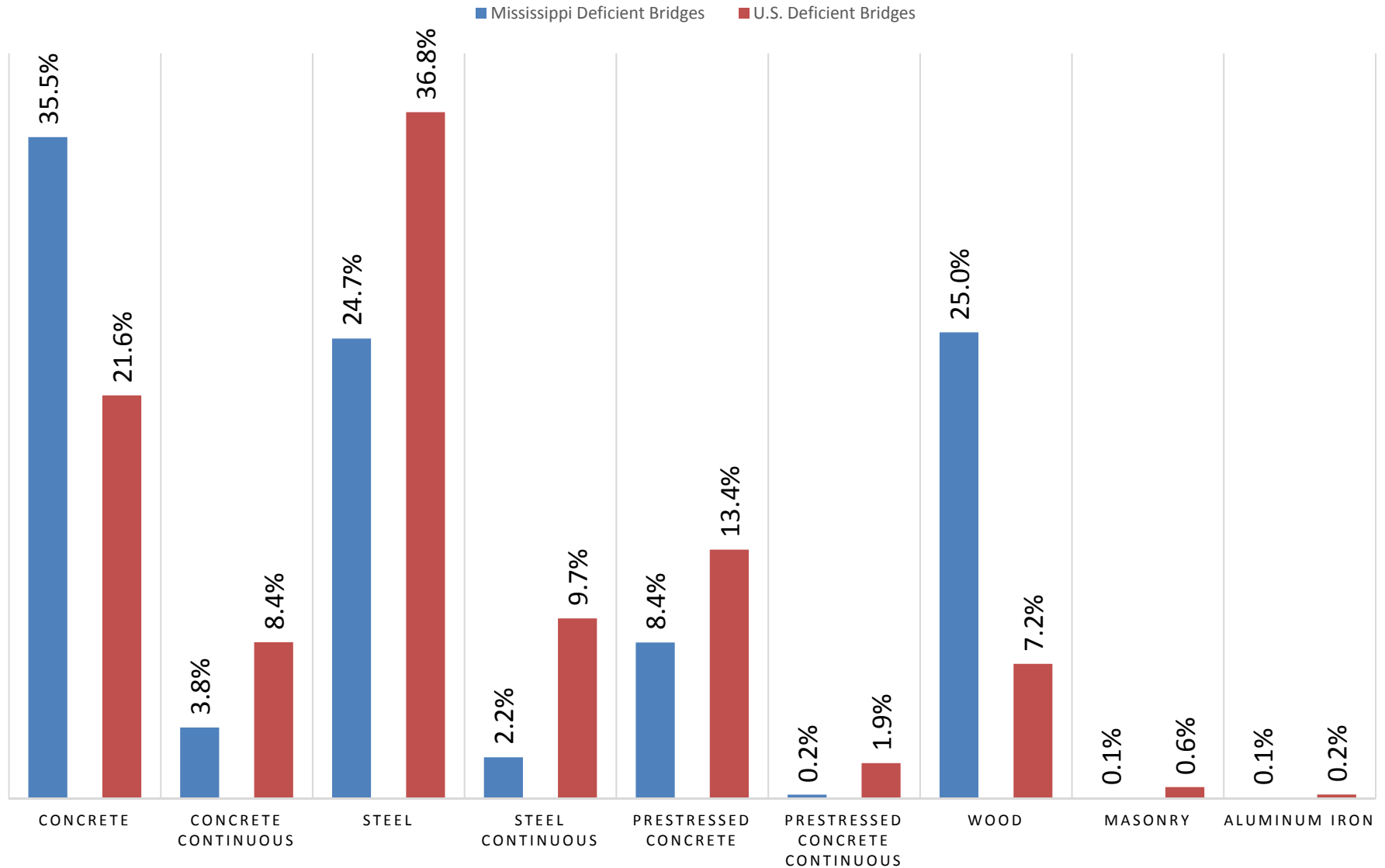
*SOURCE: U.S. DEPARTMENT OF TRANSPORTATION*



Deficient bridges includes those that are structurally deficient and those that are obsolete

## PERCENT DISTRIBUTION OF DEFICIENT BRIDGES BY MATERIAL TYPE MISSISSIPPI AND THE UNITED STATES AS OF 12/2013

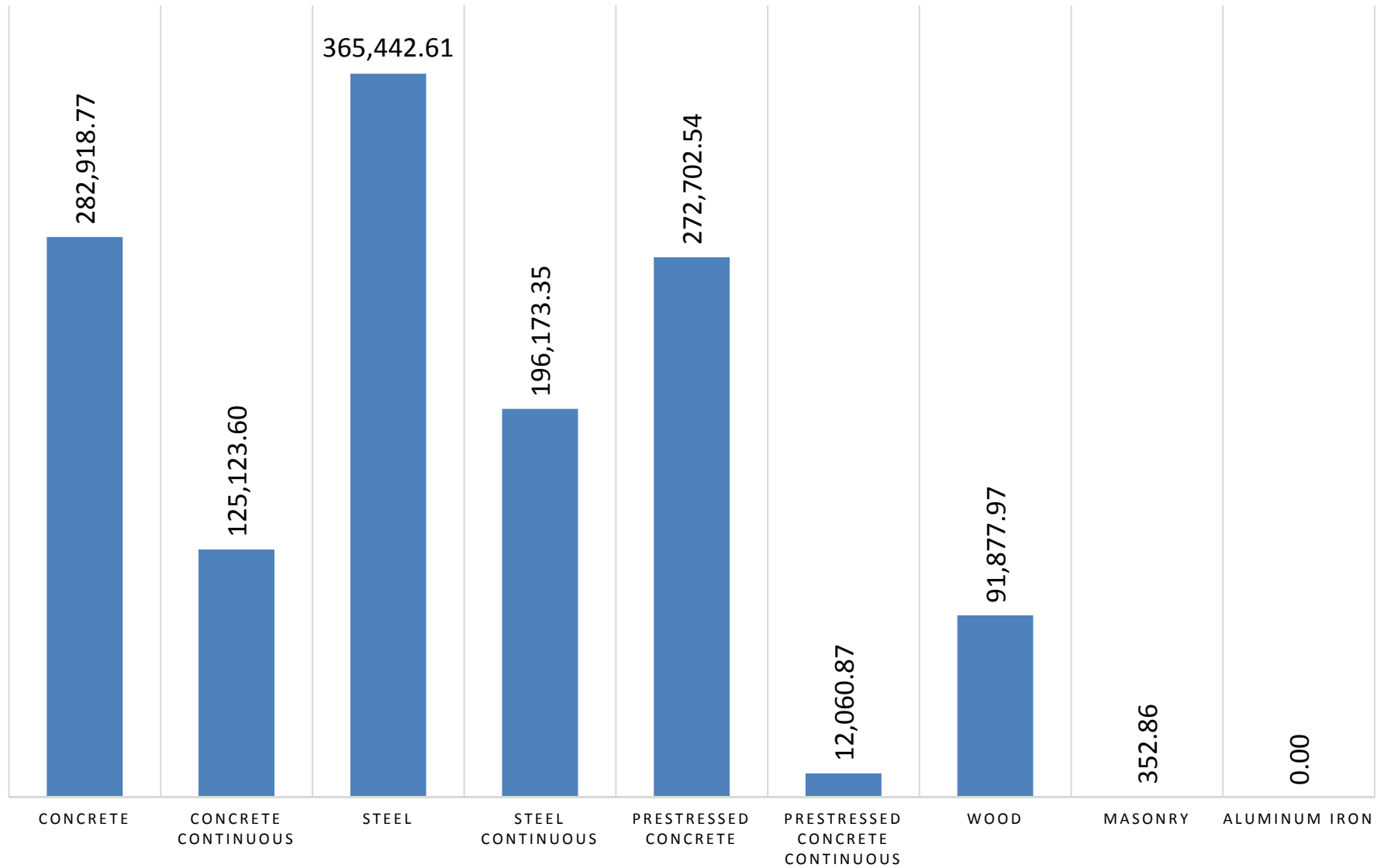
SOURCE: U.S. DEPARTMENT OF TRANSPORTATION



Deficient bridges includes those that are structurally deficient and those that are obsolete

## MISSISSIPPI DEFICIENT BRIDGES BY MATERIAL TYPE EXPRESSED IN SQUARE METERS AS OF 12/2013

SOURCE: U.S. DEPARTMENT OF EDUCATION

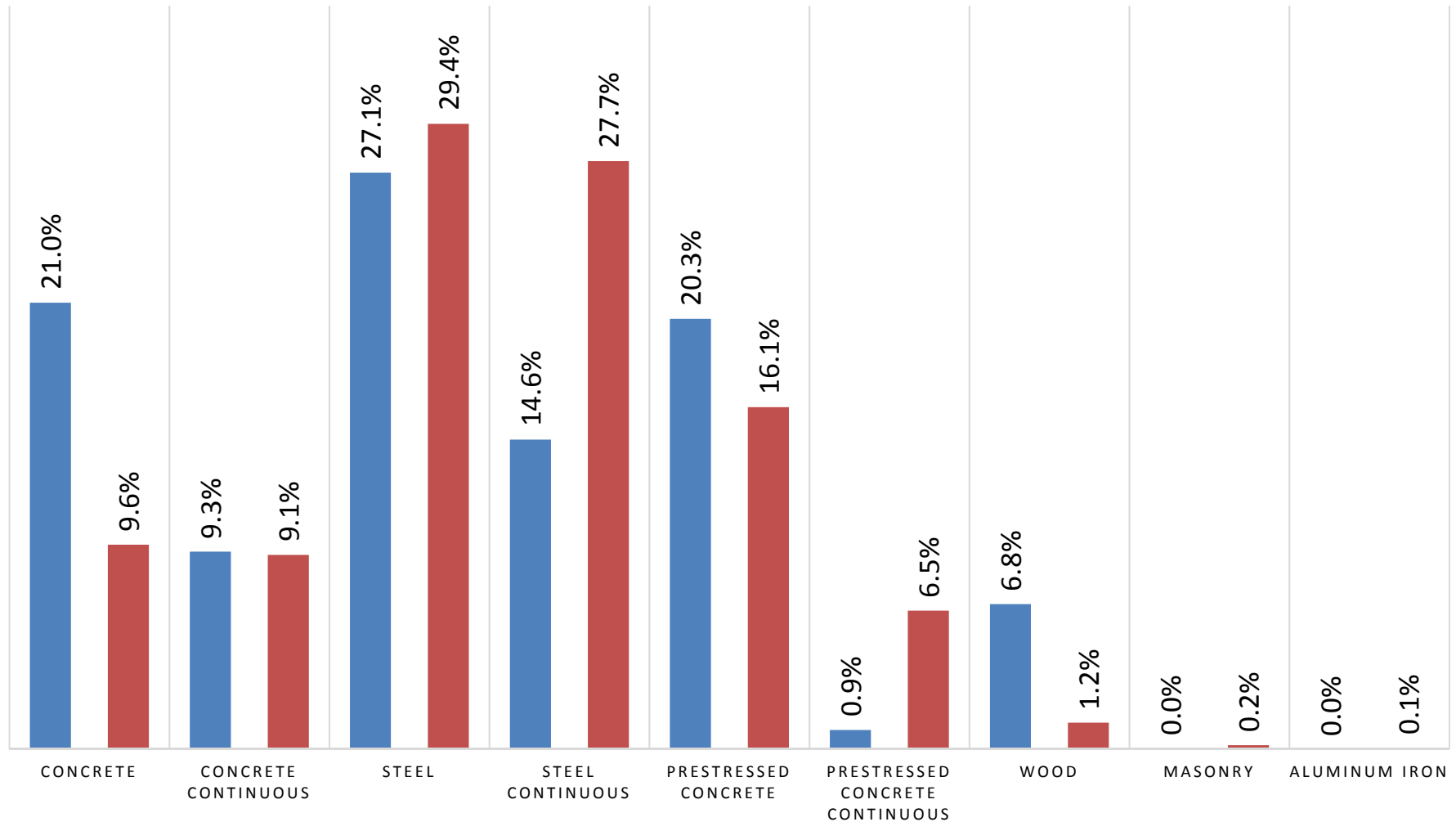


Deficient bridges includes those that are structurally deficient and those that are obsolete

# PERCENT DISTRIBUTION OF DEFICIENT BRIDGES BY MATERIAL TYPE EXPRESSED IN SQUARE METERS MISSISSIPPI AND THE U.S. AS OF 12/2013

SOURCE: U.S. DEPARTMENT OF TRANSPORTATION

■ Mississippi Deficient Bridges ■ U.S. Deficient Bridger



Deficient bridges includes those that are structurally deficient and those that are obsolete