

## Results by Question

### 1. How do you view Mississippi's Image? (Multiple Choice)

Responses		
	Percent	Count
Positive	39.19%	29
Negative	50.00%	37
Not sure	10.81%	8
<b>Totals</b>	<b>100%</b>	<b>74</b>

### 2. How do you think people outside of Mississippi view Mississippi's image? (Multiple Choice)

Responses		
	Percent	Count
Positive	1.23%	1
Negative	96.30%	78
Not sure	2.47%	2
<b>Totals</b>	<b>100%</b>	<b>81</b>

3. Do you believe there is an issue with Brain Drain in Mississippi? (Multiple Choice)

Responses		
	Percent	Count
Yes	90.00%	72
No	3.75%	3
Not sure	6.25%	5
<b>Totals</b>	<b>100%</b>	<b>80</b>

4. Do you believe the current Mississippi flag negatively impacts our economic development efforts?

Responses		
	Percent	Count
Strongly agree	48.84%	42
Somewhat agree	20.93%	18
Somewhat disagree	16.28%	14
Strongly disagree	13.95%	12
Not sure	0.00%	0
<b>Totals</b>	<b>100%</b>	<b>86</b>

5. Do you believe the current Mississippi flag hurts efforts to keep young adults in Mississippi? (Mul

Responses		
	Percent	Count
Strongly agree	35.71%	30
Somewhat agree	26.19%	22
Somewhat disagree	14.29%	12
Strongly disagree	20.24%	17
Not sure	3.57%	3
<b>Totals</b>	<b>100%</b>	<b>84</b>

6. How do you rate the quality of the workforce in Mississippi? (Multiple Choice)

Responses		
	Percent	Count
Very satisfactory	1.18%	1
Somewhat satisfactory	45.88%	39
Somewhat unsatisfactory	44.71%	38
Very unsatisfactory	8.24%	7
Undecided	0.00%	0
<b>Totals</b>	<b>100%</b>	<b>85</b>

7. Are your local K-12 schools preparing students for your company's workforce needs? (Multiple C

Responses
-----------

	Percent	Count
Strongly agree	4.76%	4
Somewhat agree	40.48%	34
Somewhat disagree	34.52%	29
Strongly disagree	16.67%	14
Not sure	3.57%	3
<b>Totals</b>	<b>100%</b>	<b>84</b>

8. Are Mississippi's community colleges preparing students for your company's workforce needs? (I

Responses		
	Percent	Count
Strongly agree	31.25%	25
Somewhat agree	52.50%	42
Somewhat disagree	7.50%	6
Strongly disagree	2.50%	2
Not sure	6.25%	5
<b>Totals</b>	<b>100%</b>	<b>80</b>

9. Are Mississippi's universities preparing students for your company's workforce needs? (Multiple

Responses		
	Percent	Count
Strongly agree	27.27%	21
Somewhat agree	51.95%	40

Somewhat disagree	12.99%	10
Strongly disagree	2.60%	2
Not sure	5.19%	4
<b>Totals</b>	<b>100%</b>	<b>77</b>

10. What percentage of your current workforce will need additional training, credentials, certification

Responses		
	Percent	Count
0-20%	18.99%	15
21-40%	29.11%	23
41-60%	15.19%	12
61-80%	18.99%	15
81-100%	17.72%	14
<b>Totals</b>	<b>100%</b>	<b>79</b>

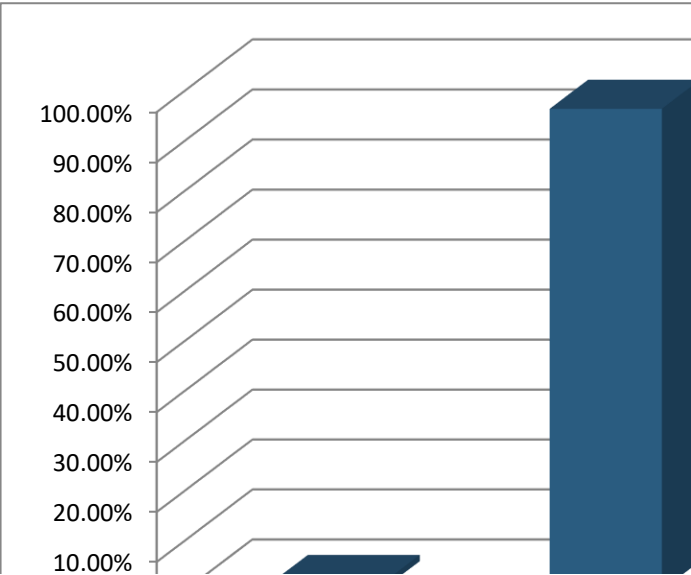
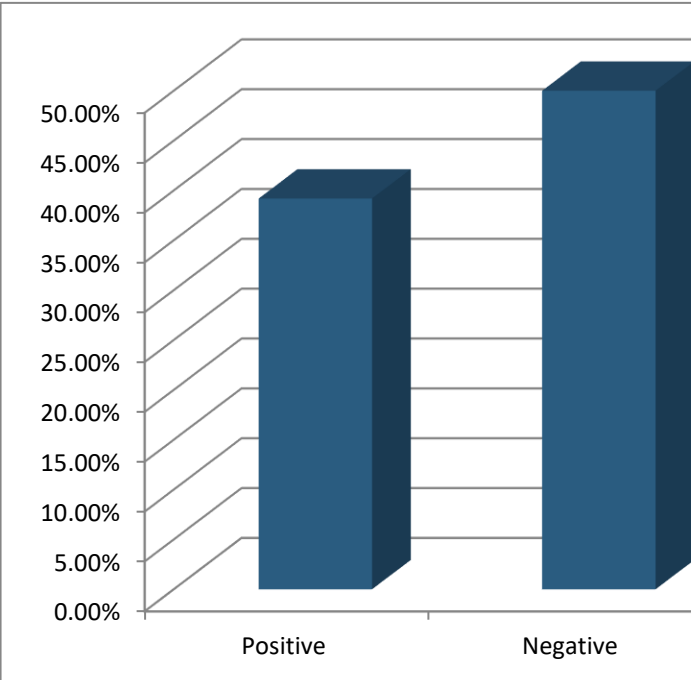
11. In a 2018 Special Session, the Legislature approved an additional \$200 million annually for both s

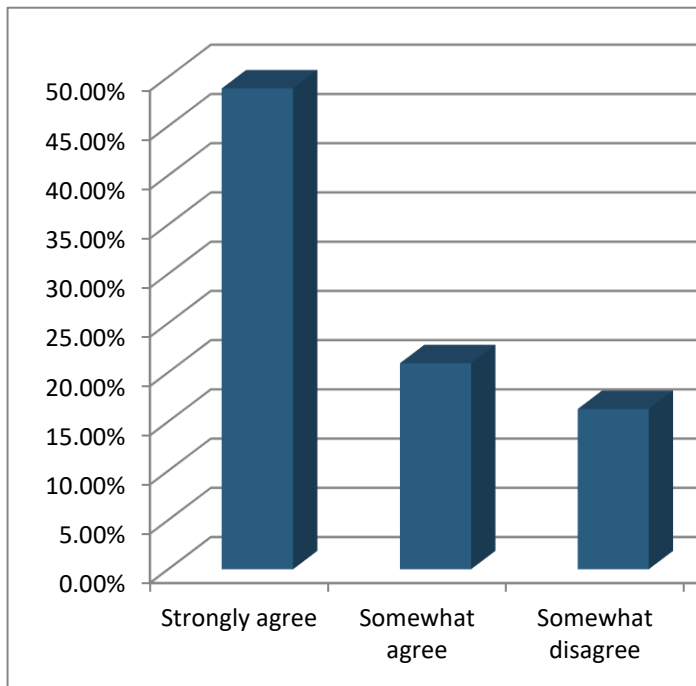
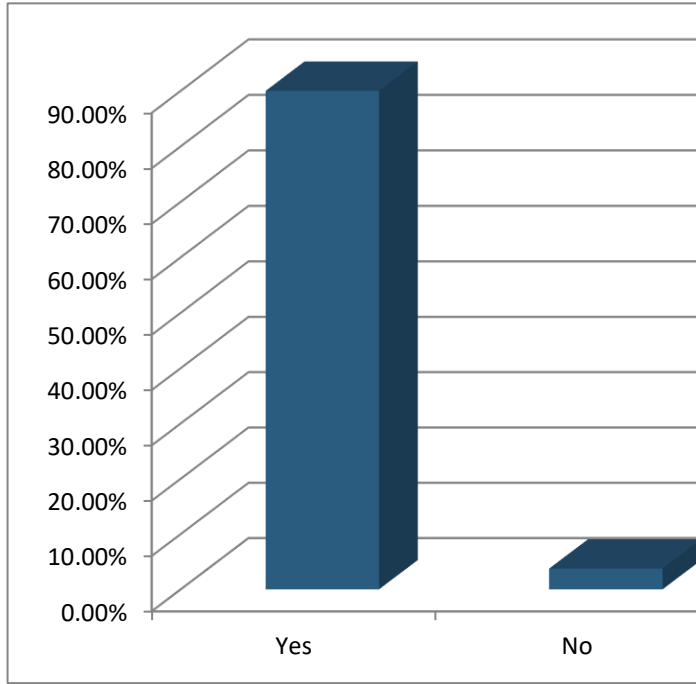
Responses		
	Percent	Count
ation needs over the next 10 years.	3.61%	3
t enough and more is needed now.	9.64%	8
ling program should be developed.	78.31%	65
Not sure	8.43%	7
<b>Totals</b>	<b>100%</b>	<b>83</b>

12. Do you believe improving healthcare in Mississippi, especially in rural areas, is vital for Mississippi?

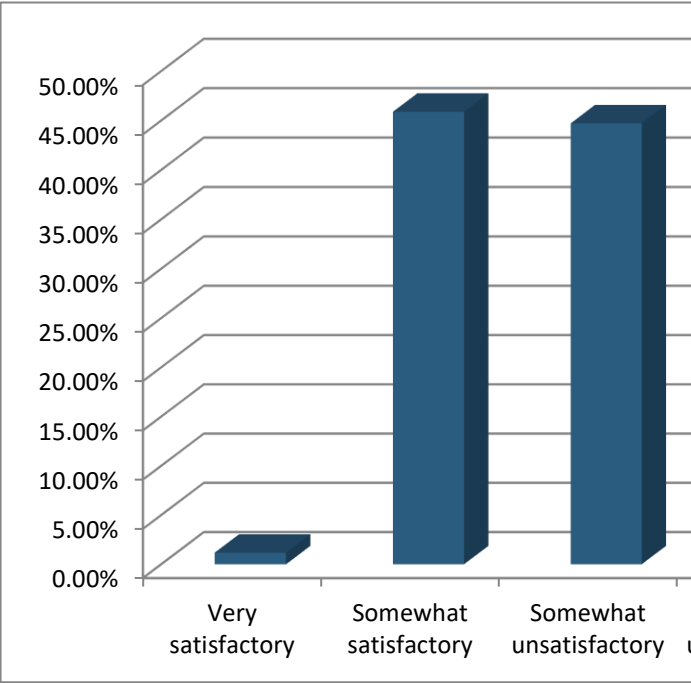
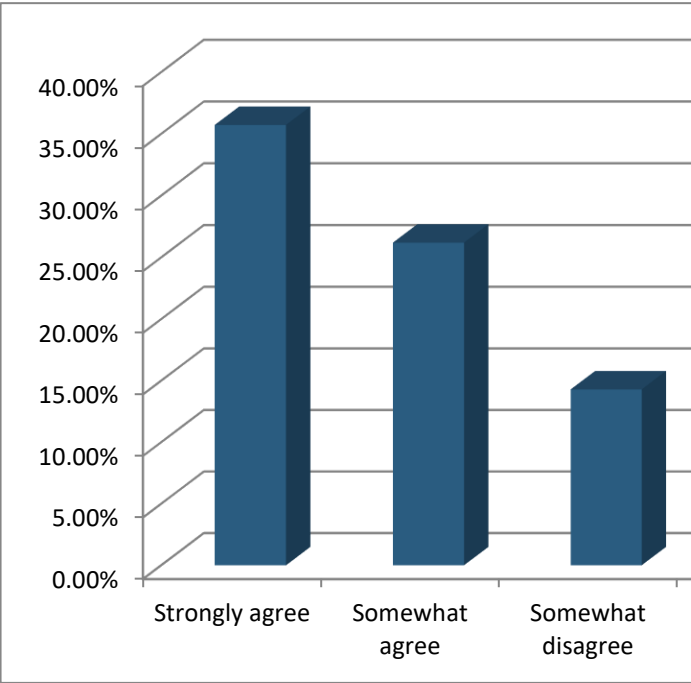
<b>Responses</b>		
	<b>Percent</b>	<b>Count</b>
Strongly agree	75.00%	60
Somewhat agree	17.50%	14
Somewhat disagree	3.75%	3
Strongly disagree	1.25%	1
Not sure	2.50%	2
<b>Totals</b>	<b>100%</b>	<b>80</b>

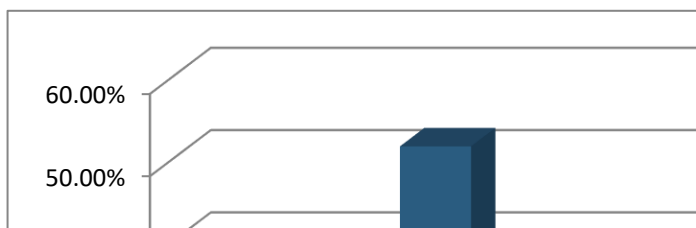
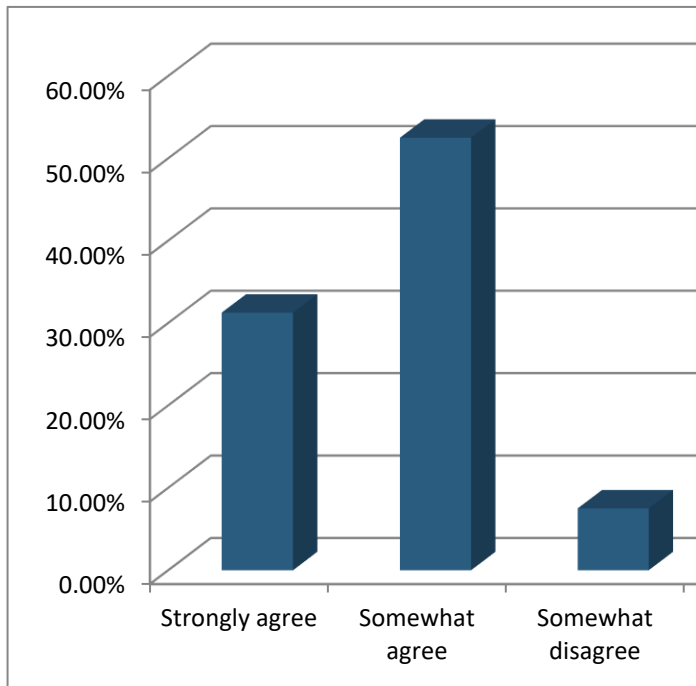
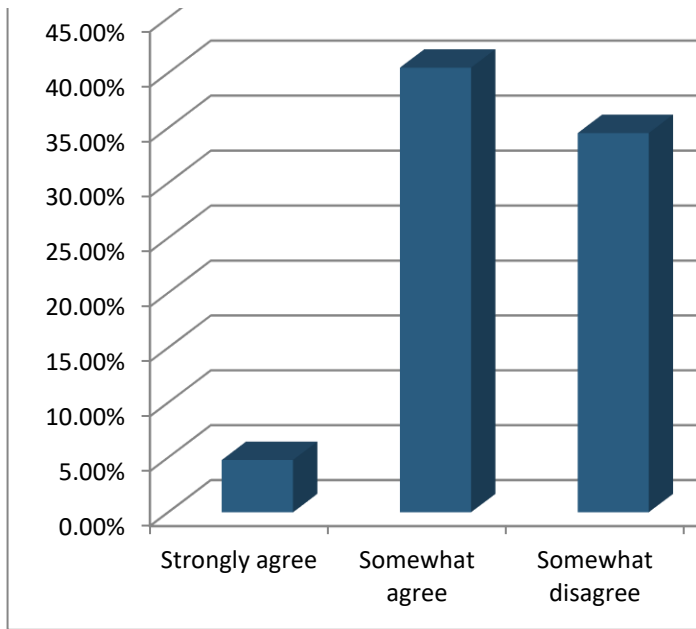
---

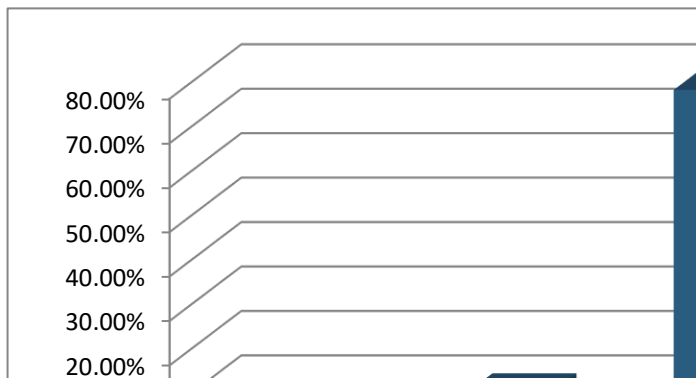
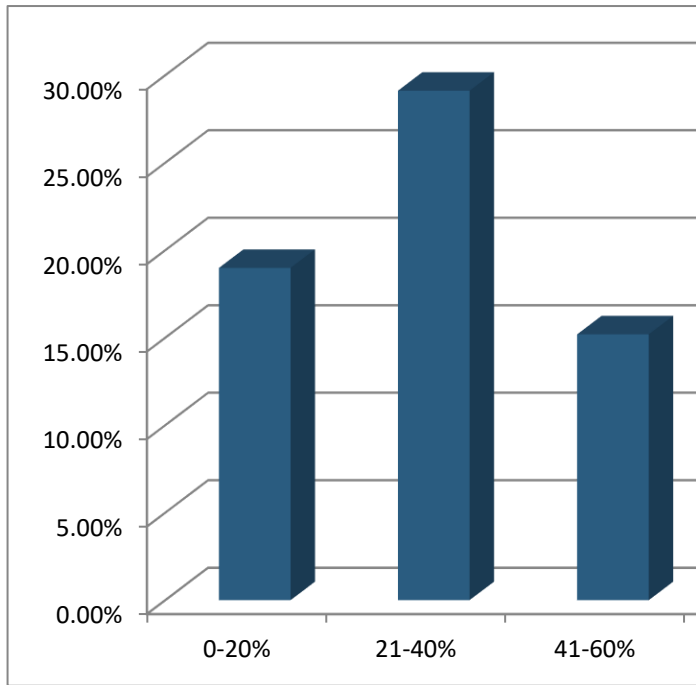
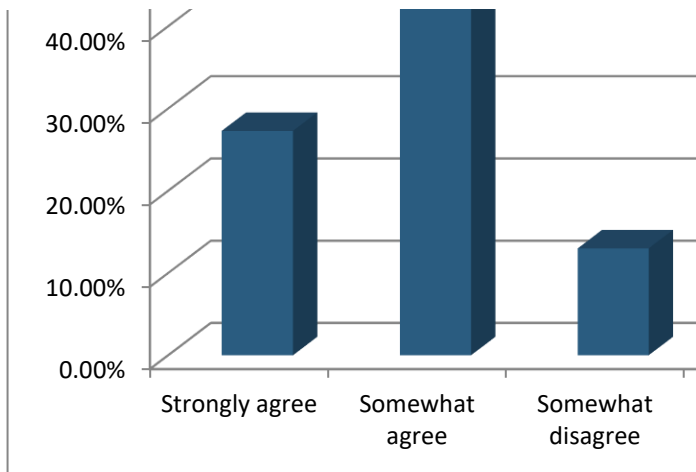


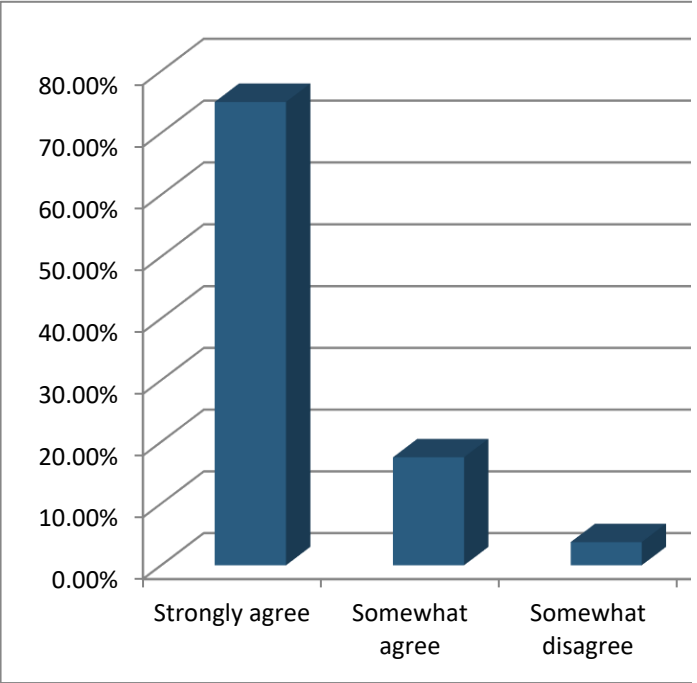
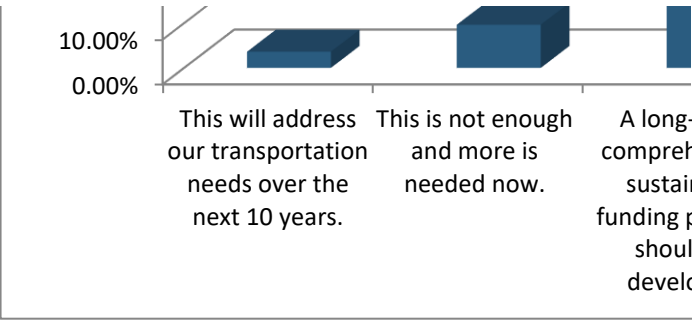


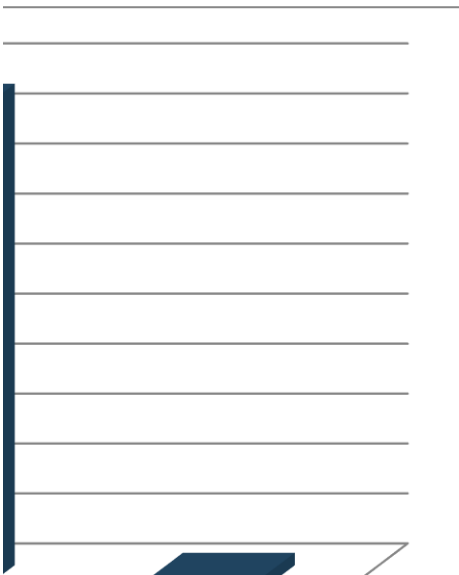
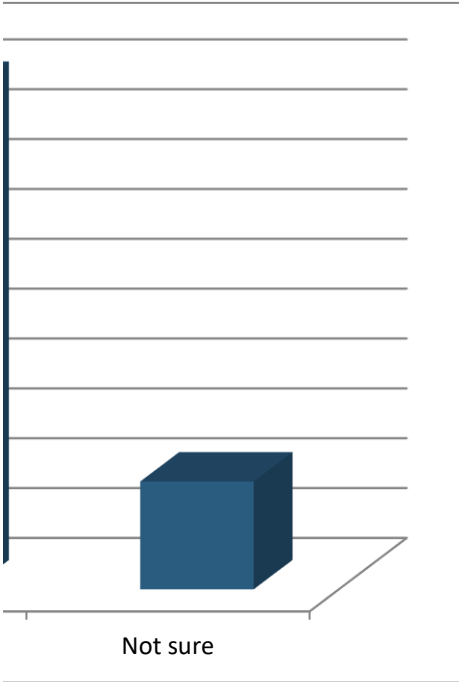


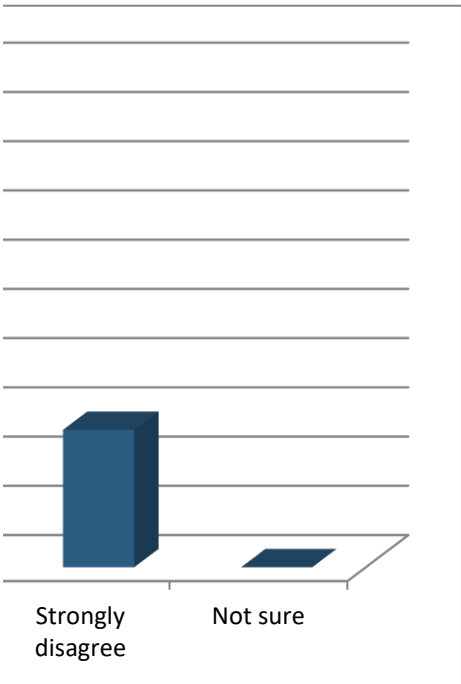
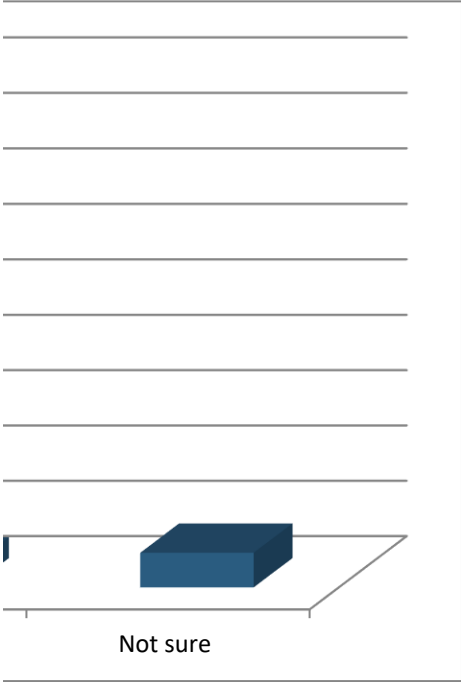
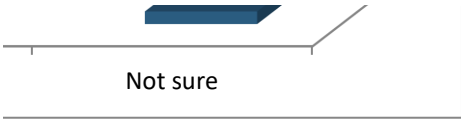


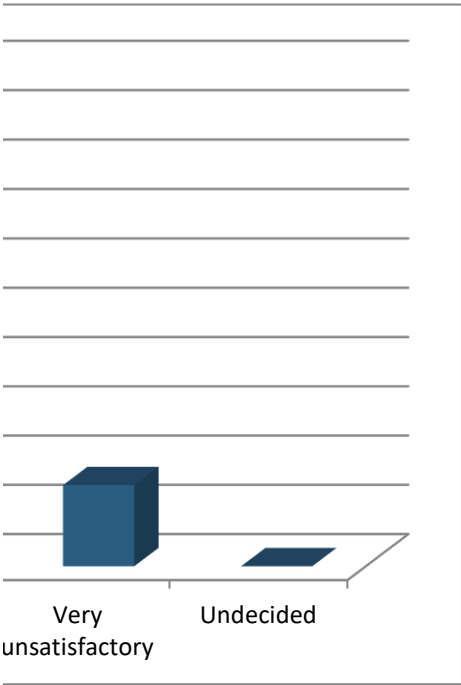
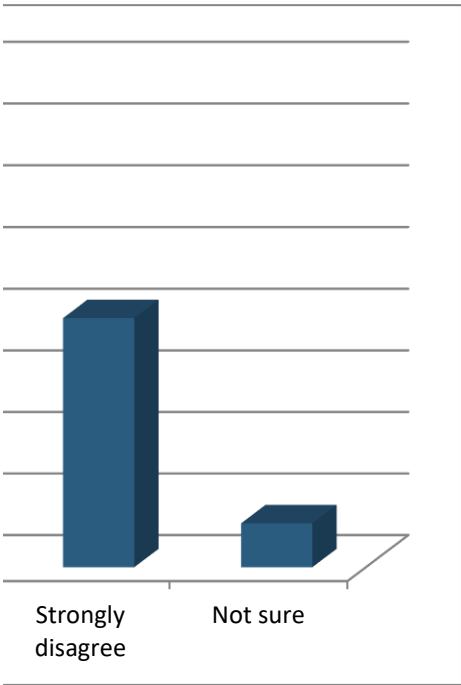


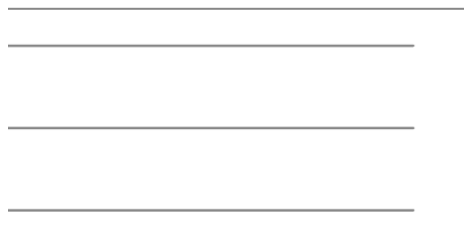
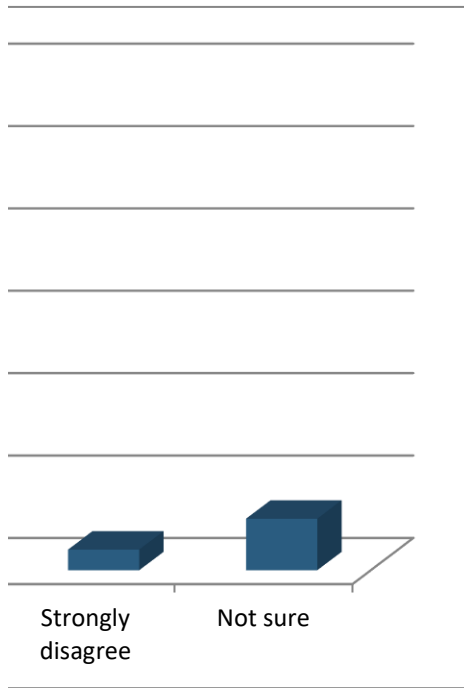
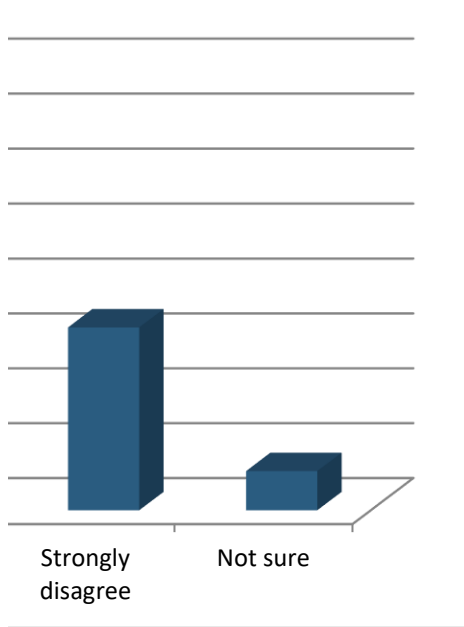




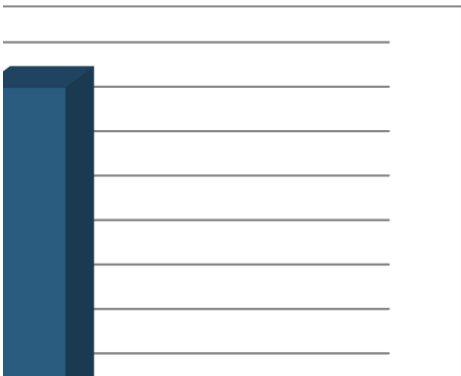
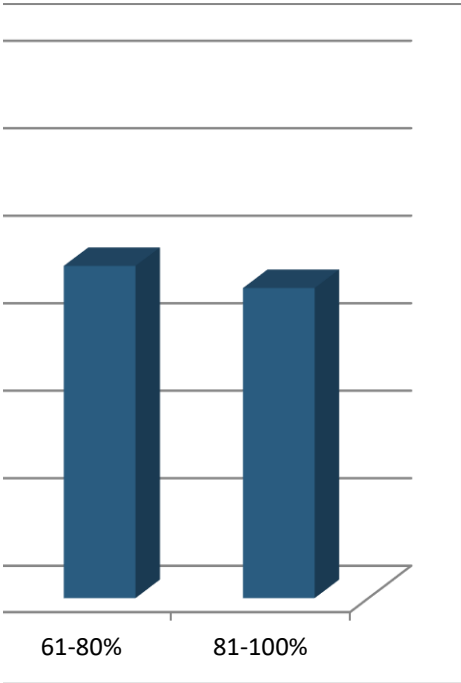
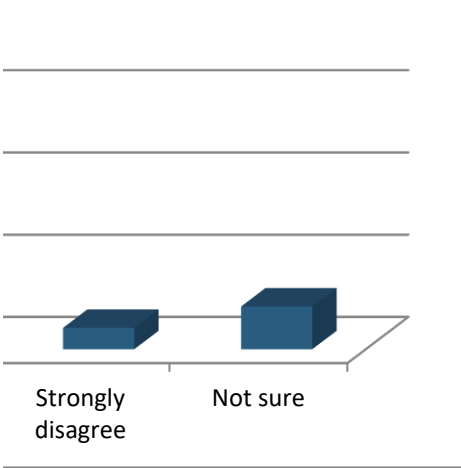














-term,  
nensive,  
nable  
program  
ld be  
oped.

Not sure

---

---

---

---

---

---

---

---

---

---



Strongly  
disagree

Not sure