

## Results by Question

### 1. How do you view Mississippi's Image? (Multiple Choice)

Responses		
	Percent	Count
Positive	28.13%	27
Negative	59.38%	57
Not sure	12.50%	12
<b>Totals</b>	<b>100%</b>	<b>96</b>

### 2. How do you think people outside of Mississippi view Mississippi's image? (Multiple Choice)

Responses		
	Percent	Count
Positive	3.03%	3
Negative	94.95%	94
Not sure	2.02%	2
<b>Totals</b>	<b>100%</b>	<b>99</b>

3. Do you believe there is an issue with Brain Drain in Mississippi? (Multiple Choice)

Responses		
	Percent	Count
Yes	91.75%	89
No	3.09%	3
Not sure	5.15%	5
<b>Totals</b>	<b>100%</b>	<b>97</b>

4. Do you believe the current Mississippi flag negatively impacts our economic development efforts?

Responses		
	Percent	Count
Strongly agree	43.14%	44
Somewhat agree	27.45%	28
Somewhat disagree	12.75%	13
Strongly disagree	14.71%	15
Not sure	1.96%	2
<b>Totals</b>	<b>100%</b>	<b>102</b>

5. Do you believe the current Mississippi flag hurts efforts to keep young adults in Mississippi? (Mul

Responses		
	Percent	Count
Strongly agree	29.00%	29
Somewhat agree	31.00%	31
Somewhat disagree	20.00%	20
Strongly disagree	19.00%	19
Not sure	1.00%	1
<b>Totals</b>	<b>100%</b>	<b>100</b>

6. How do you rate the quality of the workforce in Mississippi? (Multiple Choice)

Responses		
	Percent	Count
Very satisfactory	4.00%	4
Somewhat satisfactory	49.00%	49
Somewhat unsatisfactory	41.00%	41
Very unsatisfactory	5.00%	5
Undecided	1.00%	1
<b>Totals</b>	<b>100%</b>	<b>100</b>

7. Are your local K-12 schools preparing students for your company's workforce needs? (Multiple C

Responses
-----------

	Percent	Count
Strongly agree	1.98%	2
Somewhat agree	31.68%	32
Somewhat disagree	33.66%	34
Strongly disagree	29.70%	30
Not sure	2.97%	3
<b>Totals</b>	<b>100%</b>	<b>101</b>

8. Are Mississippi's community colleges preparing students for your company's workforce needs? (I

Responses		
	Percent	Count
Strongly agree	30.30%	30
Somewhat agree	54.55%	54
Somewhat disagree	9.09%	9
Strongly disagree	2.02%	2
Not sure	4.04%	4
<b>Totals</b>	<b>100%</b>	<b>99</b>

9. Are Mississippi's universities preparing students for your company's workforce needs? (Multiple

Responses		
	Percent	Count
Strongly agree	32.00%	32
Somewhat agree	50.00%	50

Somewhat disagree	12.00%	12
Strongly disagree	3.00%	3
Not sure	3.00%	3
<b>Totals</b>	<b>100%</b>	<b>100</b>

10. What percentage of your current workforce will need additional training, credentials, certification

Responses		
	Percent	Count
0-20%	7.00%	7
21-40%	20.00%	20
41-60%	29.00%	29
61-80%	23.00%	23
81-100%	21.00%	21
<b>Totals</b>	<b>100%</b>	<b>100</b>

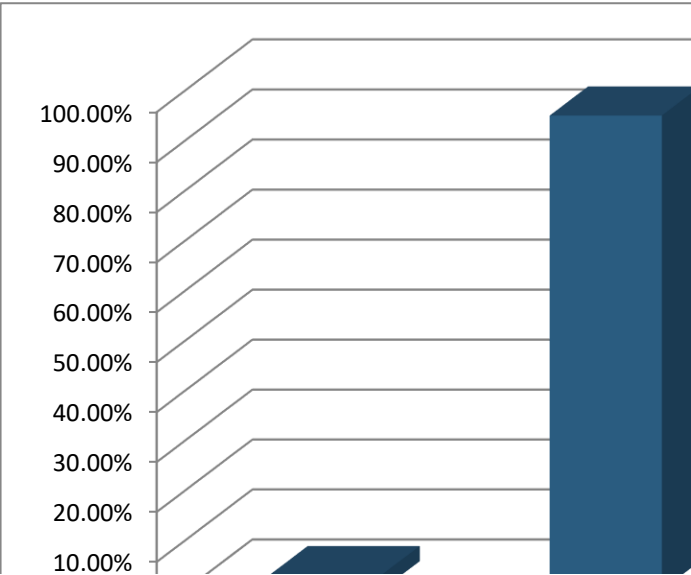
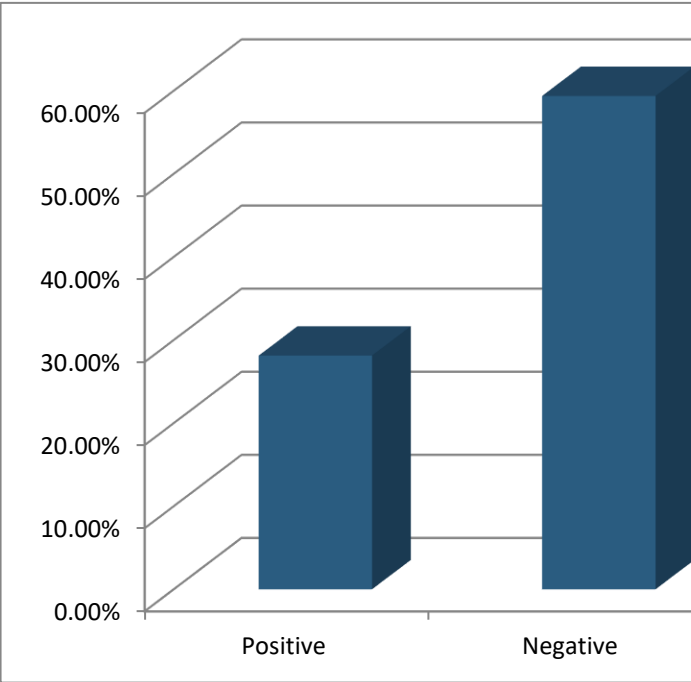
11. In a 2018 Special Session, the Legislature approved an additional \$200 million annually for both s

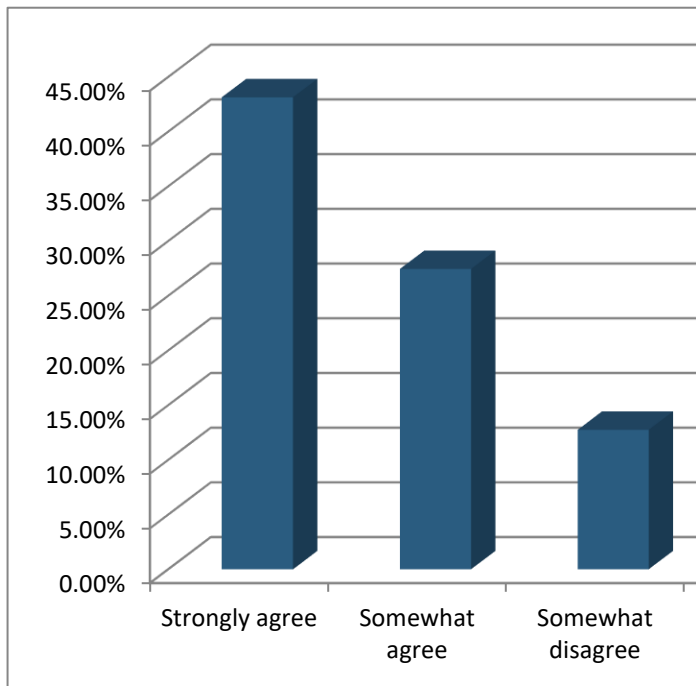
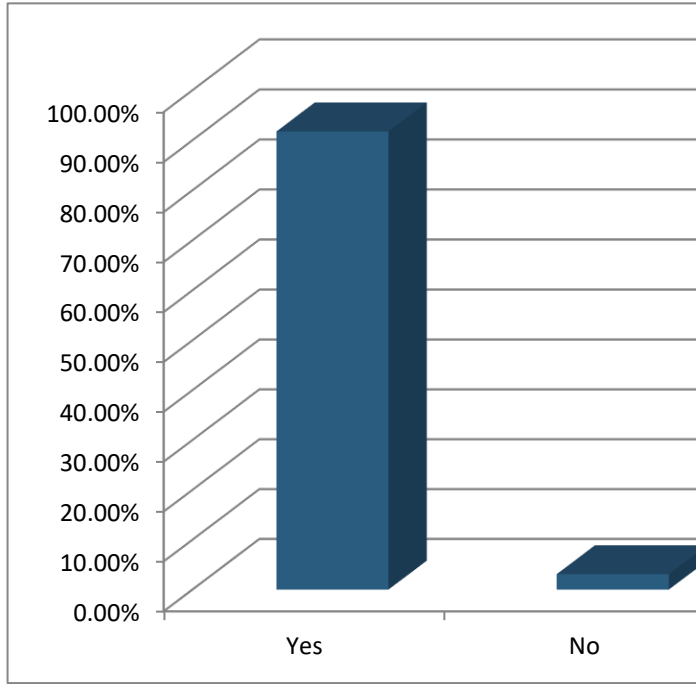
Responses		
	Percent	Count
ation needs over the next 10 years.	1.98%	2
t enough and more is needed now.	18.81%	19
ling program should be developed.	76.24%	77
Not sure	2.97%	3
<b>Totals</b>	<b>100%</b>	<b>101</b>

12. Do you believe improving healthcare in Mississippi, especially in rural areas, is vital for Mississippi?

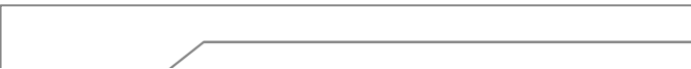
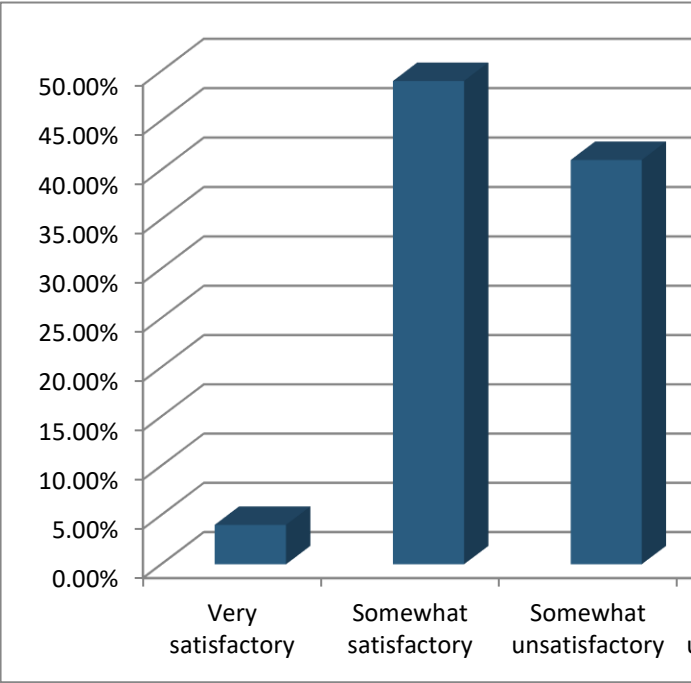
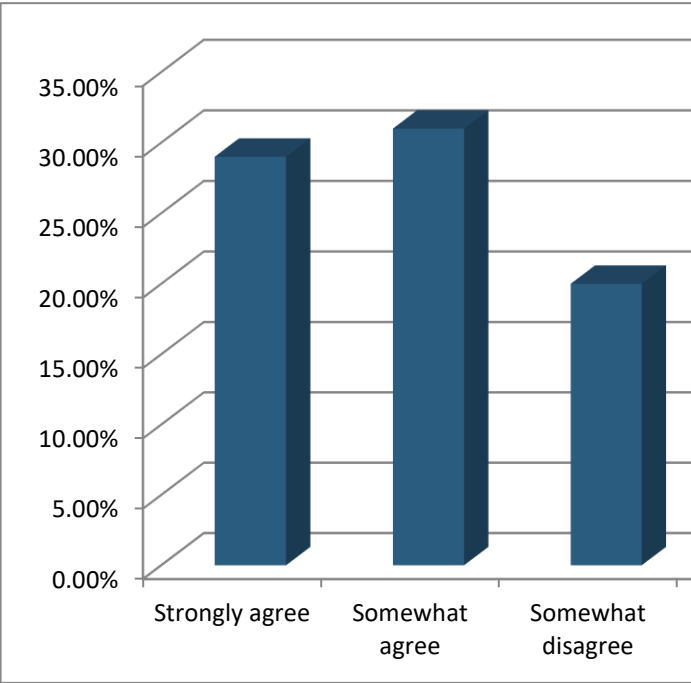
<b>Responses</b>		
	<b>Percent</b>	<b>Count</b>
Strongly agree	74.75%	74
Somewhat agree	18.18%	18
Somewhat disagree	3.03%	3
Strongly disagree	4.04%	4
Not sure	0.00%	0
<b>Totals</b>	<b>100%</b>	<b>99</b>

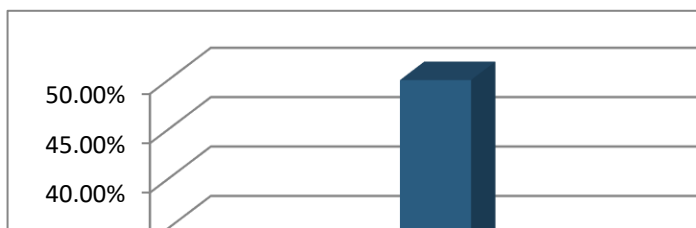
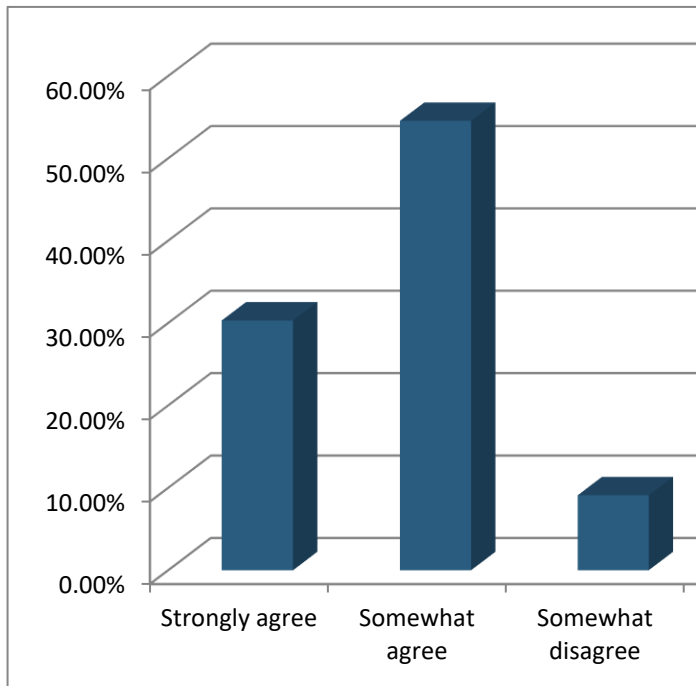
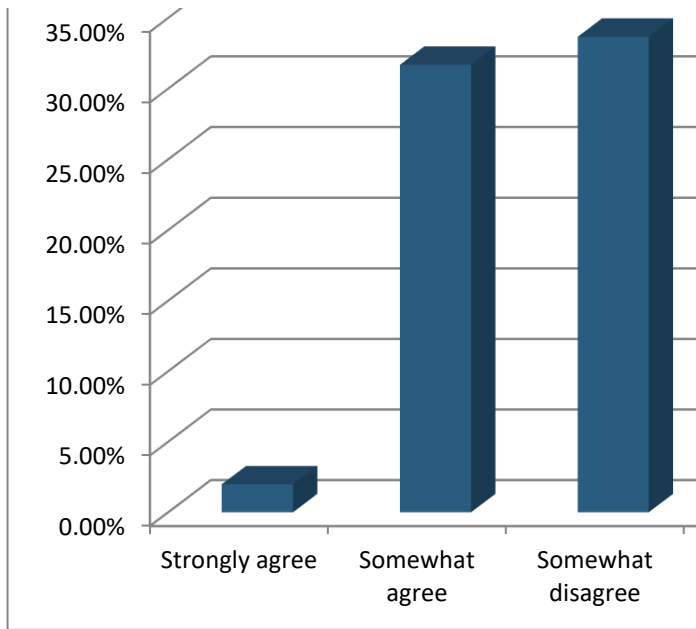
---

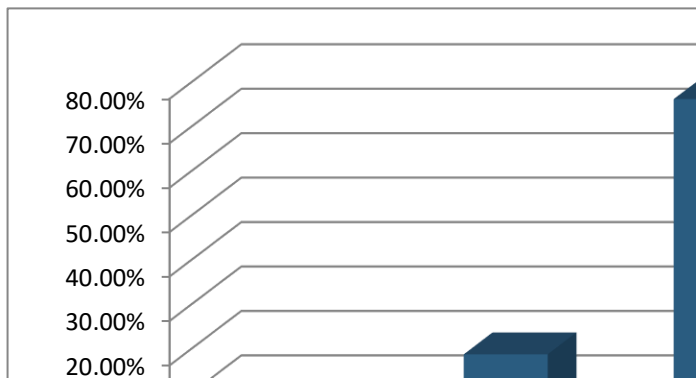
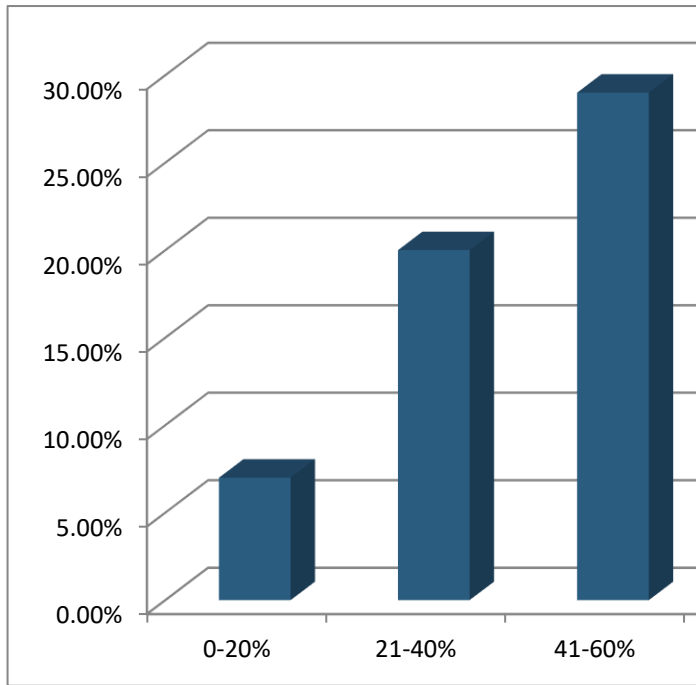
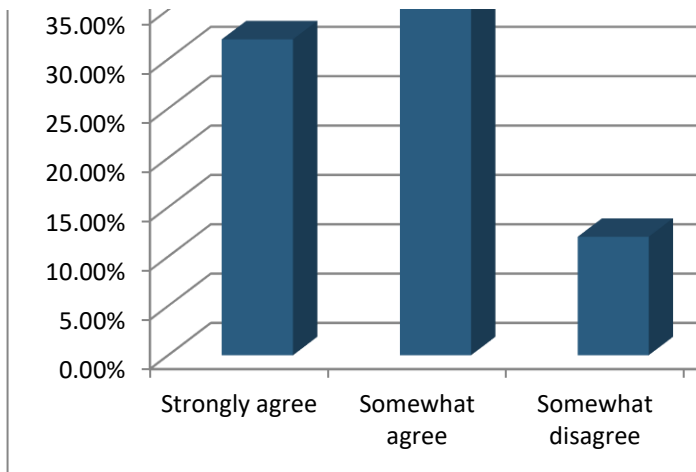


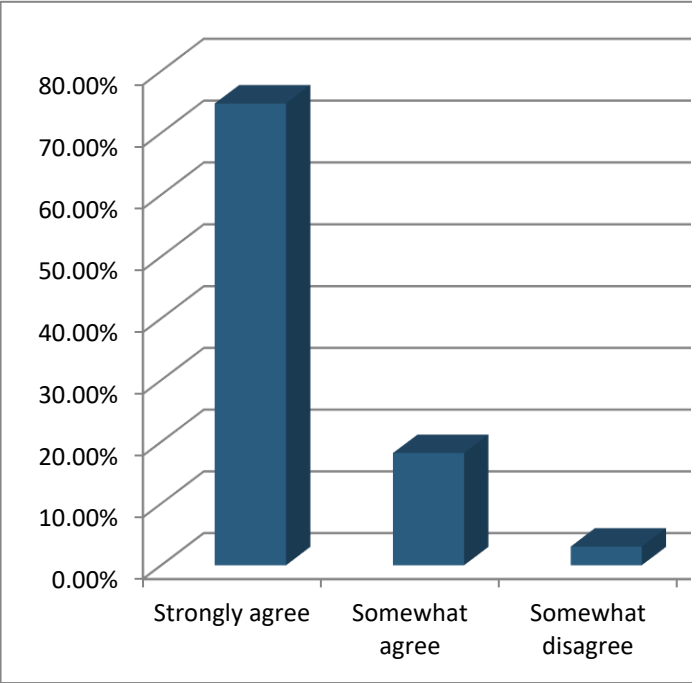
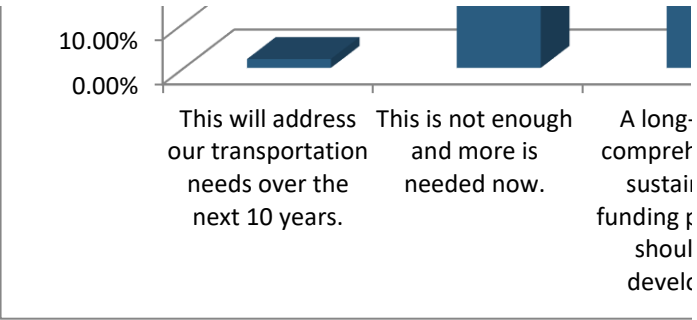


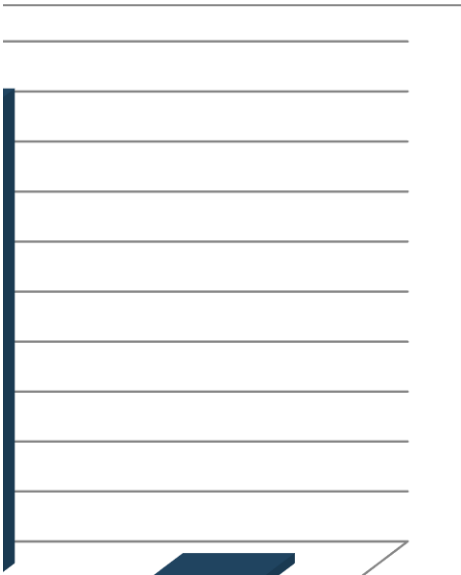
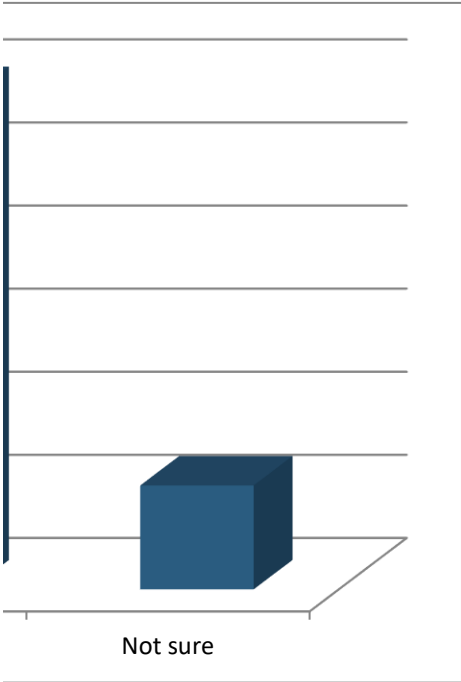


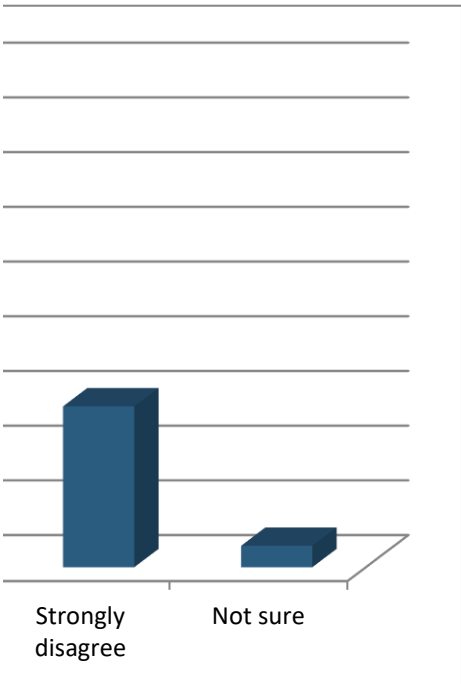
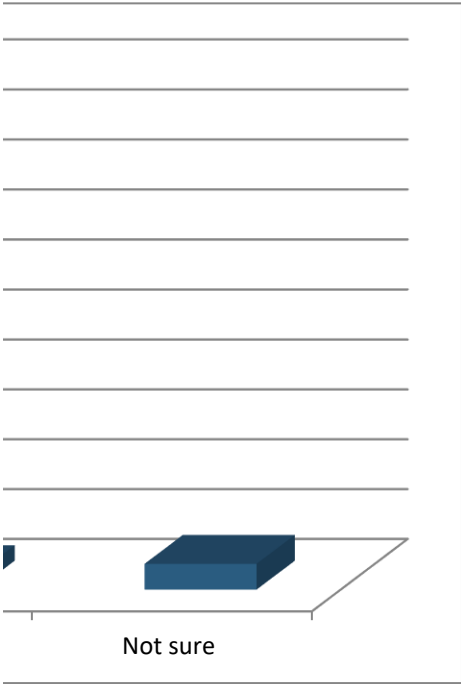
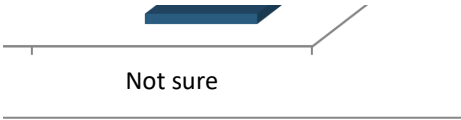


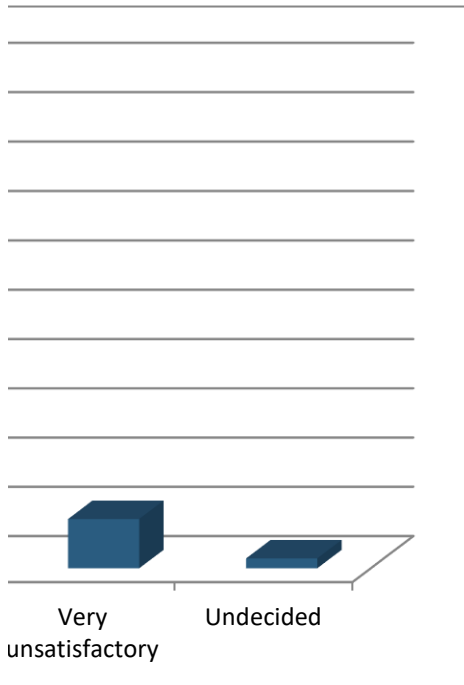
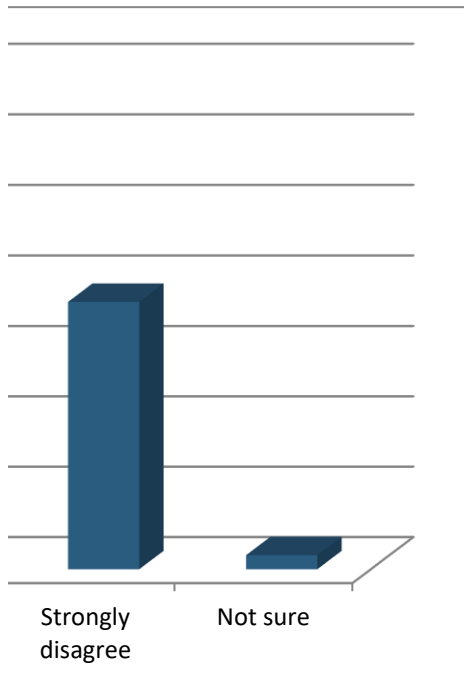


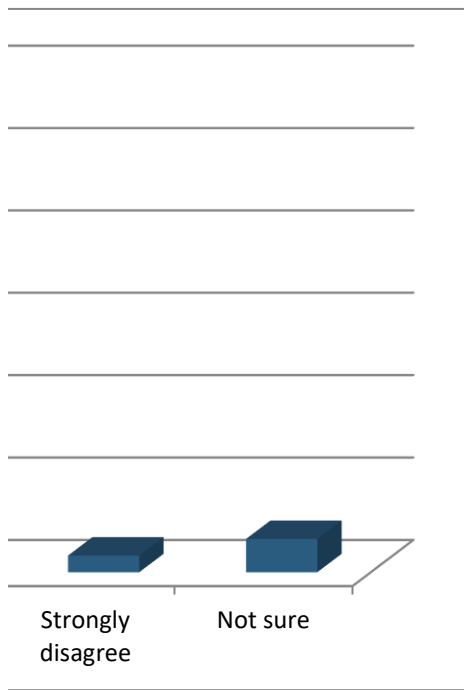
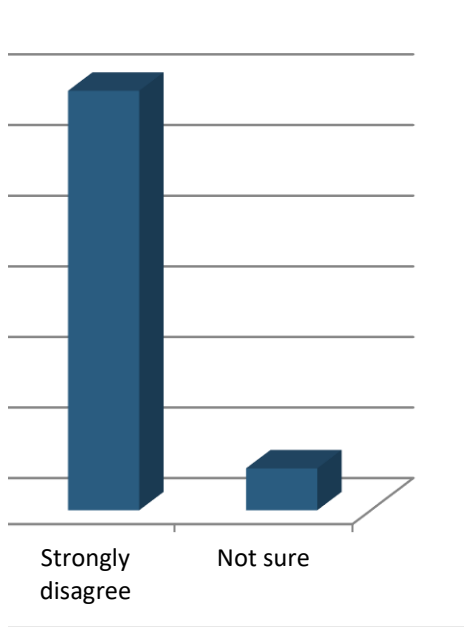




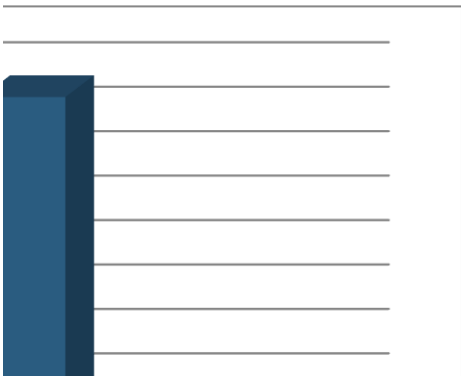
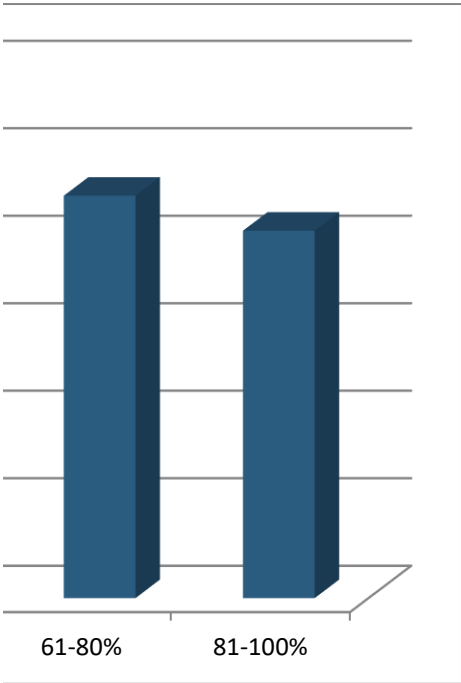
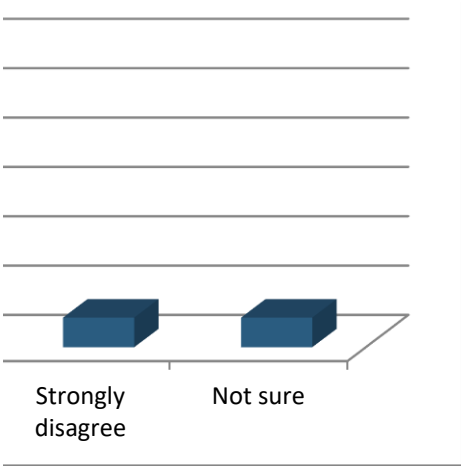














-term,  
nensive,  
nable  
program  
ld be  
oped.

Not sure

---

---

---

---

---

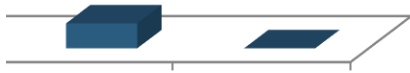
---

---

---

---

---



Strongly  
disagree

Not sure